

Product datasheet for **AP52496PU-N**

LIPJ (Center) Rabbit Polyclonal Antibody

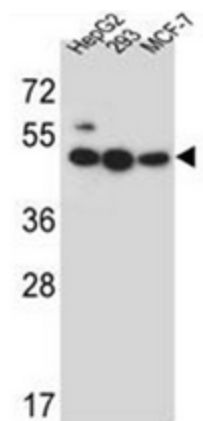
Product data:

Product Type:	Primary Antibodies
Applications:	WB
Recommended Dilution:	ELISA: 1/1000. Western Blot: 1/100-1/500.
Reactivity:	Human
Host:	Rabbit
Isotype:	Ig
Clonality:	Polyclonal
Immunogen:	KLH conjugated synthetic peptide between 193-223 amino acids from the Central region of human LIPJ
Specificity:	This antibody recognizes Human LIPJ (Center).
Formulation:	PBS containing 0.09% (W/V) Sodium Azide as preservative State: Aff - Purified State: Liquid purified Ig fraction
Concentration:	lot specific
Purification:	Protein A column, followed by peptide affinity purification
Conjugation:	Unconjugated
Storage:	Store undiluted at 2-8°C for one month or (in aliquots) at -20°C for longer. Avoid repeated freezing and thawing.
Stability:	Shelf life: one year from despatch.
Gene Name:	lipase family member J
Database Link:	Entrez Gene 142910 Human Q5W064
Synonyms:	Lipase member J, LIPL1
Note:	Molecular Weight: 42374 Da
Protein Families:	Druggable Genome



[View online »](#)

Product images:



Western blot analysis of LIPJ Antibody (Center) in HepG2, 293, MCF-7 cell line lysates (35ug/lane). This demonstrates the LIPJ antibody detected the LIPJ protein (arrow).