

Product datasheet for **AP52494PU-N**

Hormone sensitive lipase (LIPE) (C-term) Rabbit Polyclonal Antibody

Product data:

Product Type:	Primary Antibodies
Applications:	FC, IHC, WB
Recommended Dilution:	ELISA: 1/1000. Western Blot: 1/100-1/500. Flow Cytometry: 1/10-1/50. Immunohistochemistry on Paraffin Sections: 1/50-1/100.
Reactivity:	Human
Host:	Rabbit
Isotype:	Ig
Clonality:	Polyclonal
Immunogen:	KLH conjugated synthetic peptide between 828-858 amino acids from the C-terminal region of human LIPE.
Specificity:	This antibody recognizes Human LIPE (C-term).
Formulation:	PBS containing 0.09% (W/V) Sodium Azide as preservative State: Purified State: Liquid purified Ig fraction
Concentration:	lot specific
Purification:	Saturated Ammonium Sulfate (SAS) precipitation followed by dialysis against PBS
Conjugation:	Unconjugated
Storage:	Store undiluted at 2-8°C for one month or (in aliquots) at -20°C for longer. Avoid repeated freezing and thawing.
Stability:	Shelf life: one year from despatch.
Gene Name:	lipase E, hormone sensitive type
Database Link:	Entrez Gene 3991 Human Q05469



[View online »](#)

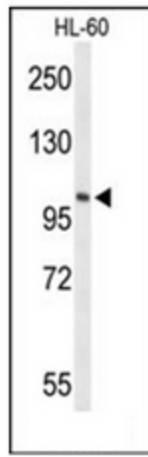
Background: LIPE has a long and a short form, generated by use of alternative translational start codons. The long form is expressed in steroidogenic tissues such as testis, where it converts cholesteryl esters to free cholesterol for steroid hormone production. The short form is expressed in adipose tissue, among others, where it hydrolyzes stored triglycerides to free fatty acids.

Synonyms: LIPE, Hormone-sensitive lipase, HSL, EC=3.1.1.79

Note: **Molecular Weight:** 116598 Da

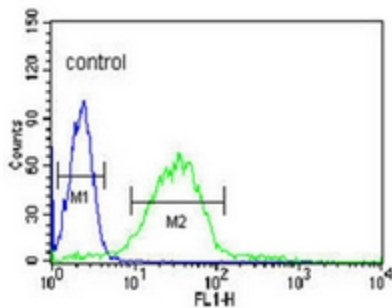
Protein Pathways: Insulin signaling pathway

Product images:



Western blot analysis of LIPE Antibody (C-term) in HL-60 cell line lysates (35ug/lane). LIPE (arrow) was detected using the purified Pab.

HL-60



Flow cytometric analysis of HL-60 cells using LIPE Antibody (C-term) (right histogram) compared to a negative control cell (left histogram). FITC-conjugated goat-anti-rabbit secondary antibodies were used for the analysis.