

Product datasheet for **AP52491PU-N**

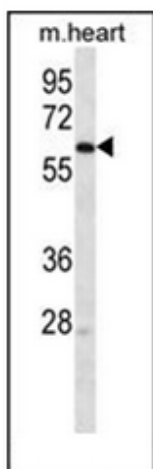
LINGO4 (C-term) Rabbit Polyclonal Antibody

Product data:

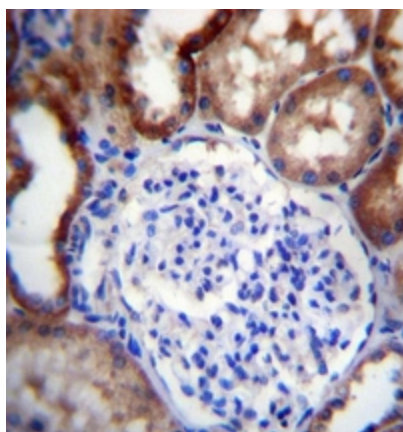
Product Type:	Primary Antibodies
Applications:	IHC, WB
Recommended Dilution:	ELISA: 1/1000. Western Blot: 1/100-1/500. Immunohistochemistry on Paraffin Sections: 1/10-1/50.
Reactivity:	Human, Mouse
Host:	Rabbit
Isotype:	Ig
Clonality:	Polyclonal
Immunogen:	KLH conjugated synthetic peptide between 550-579 amino acids from the C-terminal region of human LINGO4
Specificity:	This antibody recognizes Human and Mouse LINGO4 (C-term).
Formulation:	PBS containing 0.09% (W/V) Sodium Azide as preservative State: Aff - Purified State: Liquid purified Ig fraction
Concentration:	lot specific
Purification:	Protein A column, followed by peptide affinity purification
Conjugation:	Unconjugated
Storage:	Store undiluted at 2-8°C for one month or (in aliquots) at -20°C for longer. Avoid repeated freezing and thawing.
Stability:	Shelf life: one year from despatch.
Gene Name:	leucine rich repeat and Ig domain containing 4
Database Link:	Entrez Gene 320747 Mouse Entrez Gene 339398 Human Q6UY18
Synonyms:	LRRN6D
Note:	Molecular Weight: 63774 Da
Protein Families:	Druggable Genome, Transmembrane



[View online »](#)

Product images:

Western blot analysis of LINGO4 Antibody (C-term) in mouse heart tissue lysates (35ug/lane). This demonstrates the LINGO4 antibody detected the LINGO4 protein (arrow).



Immunohistochemistry analysis in formalin fixed and paraffin embedded human kidney tissue reacted with LINGO4 Antibody (C-term) followed by peroxidase conjugation of the secondary antibody and DAB staining.