

Product datasheet for **AP52490PU-N**

LINGO3 (C-term) Rabbit Polyclonal Antibody

Product data:

Product Type:	Primary Antibodies
Applications:	WB
Recommended Dilution:	ELISA: 1/1000. Western Blot: 1/100-1/500.
Reactivity:	Human
Host:	Rabbit
Isotype:	Ig
Clonality:	Polyclonal
Immunogen:	KLH conjugated synthetic peptide between 394-424 amino acids from the C-terminal region of human LINGO3
Specificity:	This antibody recognizes Human LINGO3 (C-term).
Formulation:	PBS containing 0.09% (W/V) Sodium Azide as preservative State: Aff - Purified State: Liquid purified Ig fraction
Concentration:	lot specific
Purification:	Protein A column, followed by peptide affinity purification
Conjugation:	Unconjugated
Storage:	Store undiluted at 2-8°C for one month or (in aliquots) at -20°C for longer. Avoid repeated freezing and thawing.
Stability:	Shelf life: one year from despatch.
Gene Name:	leucine rich repeat and Ig domain containing 3
Database Link:	Entrez Gene 645191 Human P0C6S8

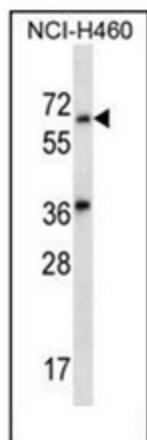


Synonyms: Leucine-rich repeat and immunoglobulin-like domain-containing nogo receptor-interacting protein 3, LERN2, LRRN6B

Note: **Molecular Weight:** 64881 Da

Protein Families: Transmembrane

Product images:



Western blot analysis of LINGO3 Antibody (C-term) in NCI-H460 cell line lysates (35ug/lane). This demonstrates the LINGO3 antibody detected the LINGO3 protein (arrow).