

## Product datasheet for **AP52489PU-N**

### LIN7C (C-term) Rabbit Polyclonal Antibody

#### Product data:

Product Type:	Primary Antibodies
Applications:	IHC, WB
Recommended Dilution:	<b>ELISA:</b> 1/1000. <b>Western Blot:</b> 1/100-1/500. <b>Immunohistochemistry on Paraffin Sections:</b> 1/10-1/50.
Reactivity:	Human
Host:	Rabbit
Isotype:	Ig
Clonality:	Polyclonal
Immunogen:	KLH conjugated synthetic peptide between 175-197 amino acids from the C-terminal region of Human LIN7C.
Specificity:	This antibody recognizes Human LIN7C (C-term).
Formulation:	PBS containing 0.09% (W/V) Sodium Azide as preservative State: Aff - Purified State: Liquid purified Ig fraction
Concentration:	lot specific
Purification:	Protein A column, followed by peptide affinity purification
Conjugation:	Unconjugated
Storage:	Store undiluted at 2-8°C for one month or (in aliquots) at -20°C for longer. Avoid repeated freezing and thawing.
Stability:	Shelf life: one year from despatch.
Gene Name:	lin-7 homolog C, crumbs cell polarity complex component
Database Link:	<a href="#">Entrez Gene 55327 Human Q9NUP9</a>



[View online »](#)

**Background:**

LIN7C plays a role in establishing and maintaining the asymmetric distribution of channels and receptors at the plasma membrane of polarized cells. Forms membrane-associated multiprotein complexes that may regulate delivery and recycling of proteins to the correct membrane domains. The tripartite complex composed of LIN7 (LIN7A, LIN7B or LIN7C), CASK and APBA1 may have the potential to couple synaptic vesicle exocytosis to cell adhesion in brain. Ensures the proper localization of GRIN2B (subunit 2B of the NMDA receptor) to neuronal postsynaptic density and may function in localizing synaptic vesicles at synapses where it is recruited by beta-catenin and cadherin. Required to localize Kir2 channels, GABA transporter (SLC6A12) and EGFR/ERBB1, ERBB2, ERBB3 and ERBB4 to the basolateral membrane of epithelial cells.

**Synonyms:**

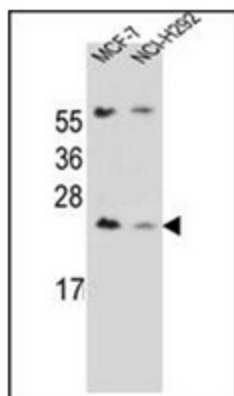
LIN7C, MALS3, VELI3, Lin-7 homolog C, Lin-7C, Mammalian lin-seven protein 3, MALS-3, Vertebrate lin-7 homolog 3, Veli-3 protein

**Note:**

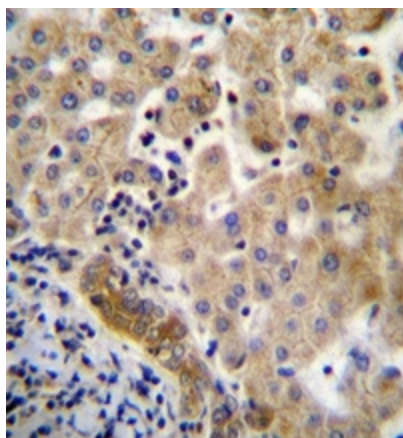
**Molecular Weight:** 21834 Da

**Protein Families:**

Druggable Genome

**Product images:**

Western blot analysis of LIN7C Antibdy (C-term) in MCF-7, NCI-H292 cell line lysates (35ug/lane). This demonstrates the LIN7C antibody detected the LIN7C protein (arrow).



Immunohistochemistry analysis in formalin fixed and paraffin embedded human liver tissue reacted with LIN7C Antibdy (C-term) followed by peroxidase conjugation of the secondary antibody and DAB staining.