

Product datasheet for **AP52484PU-N**

EPLIN (LIMA1) (N-term) Rabbit Polyclonal Antibody

Product data:

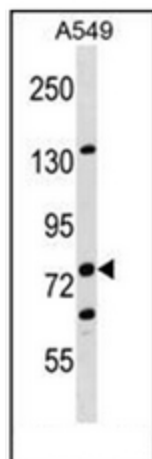
Product Type:	Primary Antibodies
Applications:	WB
Recommended Dilution:	ELISA: 1/1000. Western Blot: 1/100-1/500.
Reactivity:	Human
Host:	Rabbit
Isotype:	Ig
Clonality:	Polyclonal
Immunogen:	KLH conjugated synthetic peptide between 134-163 amino acids from the N-terminal region of human LIMA1
Specificity:	This antibody recognizes Human LIMA1 (N-term).
Formulation:	PBS containing 0.09% (W/V) Sodium Azide as preservative State: Aff - Purified State: Liquid purified Ig fraction
Concentration:	lot specific
Purification:	Protein A column, followed by peptide affinity purification
Conjugation:	Unconjugated
Storage:	Store undiluted at 2-8°C for one month or (in aliquots) at -20°C for longer. Avoid repeated freezing and thawing.
Stability:	Shelf life: one year from despatch.
Gene Name:	LIM domain and actin binding 1
Database Link:	Entrez Gene 51474 Human Q9UHB6
Background:	EPLIN is a cytoskeleton-associated protein that inhibits actin filament depolymerization and cross-links filaments in bundles (Maul et al., 2003 [PubMed 12566430]).
Synonyms:	LIMA1, EPLIN, SREBP3, LIM domain and actin-binding protein 1, Epithelial protein lost in neoplasm



[View online »](#)

Note: **Molecular Weight:** 85226 Da

Product images:



Western blot analysis of LIMA1 Antibody (N-term) in A549 cell line lysates (35ug/lane). This demonstrates the LIMA1 antibody detected the LIMA1 protein (arrow).