

Product datasheet for **AP52483PU-N**

LIM2 (C-term) Rabbit Polyclonal Antibody

Product data:

Product Type:	Primary Antibodies
Applications:	WB
Recommended Dilution:	ELISA: 1/1000. Western Blot: 1/100-1/500.
Reactivity:	Human
Host:	Rabbit
Isotype:	Ig
Clonality:	Polyclonal
Immunogen:	KLH conjugated synthetic peptide between 109-137 amino acids from the C-terminal region of human LIM2
Specificity:	This antibody recognizes Human LIM2 (C-term).
Formulation:	PBS containing 0.09% (W/V) Sodium Azide as preservative State: Aff - Purified State: Liquid purified Ig fraction
Concentration:	lot specific
Purification:	Protein A column, followed by peptide affinity purification
Conjugation:	Unconjugated
Storage:	Store undiluted at 2-8°C for one month or (in aliquots) at -20°C for longer. Avoid repeated freezing and thawing.
Stability:	Shelf life: one year from despatch.
Gene Name:	lens intrinsic membrane protein 2
Database Link:	Entrez Gene 3982 Human P55344
Background:	LIM2 is an eye lens-specific protein found at the junctions of lens fiber cells, where it may contribute to cell junctional organization. It acts as a receptor for calmodulin, and may play an important role in both lens development and cataractogenesis. Mutations in this gene have been associated with cataract formation.
Synonyms:	MP18, MP19, MP20

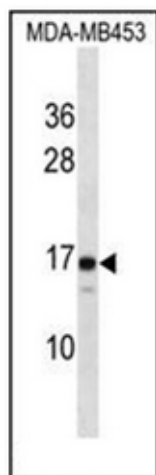


[View online »](#)

Note: **Molecular Weight:** 19674 Da

Protein Families: Druggable Genome, Transmembrane

Product images:



Western blot analysis of LIM2 Antibody (C-term) in MDA-MB453 cell line lysates (35ug/lane). This demonstrates the LIM2 antibody detected the LIM2 protein (arrow).