

Product datasheet for **AP52480PU-N**

LILRA5 (N-term) Rabbit Polyclonal Antibody

Product data:

Product Type:	Primary Antibodies
Applications:	WB
Recommended Dilution:	ELISA: 1/1000. Western Blot: 1/100-1/500.
Reactivity:	Human
Host:	Rabbit
Isotype:	Ig
Clonality:	Polyclonal
Immunogen:	KLH conjugated synthetic peptide between 63-93 amino acids from the N-terminal region of Human CD85f / LILRA5.
Specificity:	This antibody recognizes Human CD85f / LILRA5 (N-term).
Formulation:	PBS containing 0.09% (W/V) Sodium Azide as preservative State: Aff - Purified State: Liquid purified Ig fraction
Concentration:	lot specific
Purification:	Protein A column, followed by peptide affinity purification
Conjugation:	Unconjugated
Storage:	Store undiluted at 2-8°C for one month or (in aliquots) at -20°C for longer. Avoid repeated freezing and thawing.
Stability:	Shelf life: one year from despatch.
Gene Name:	leukocyte immunoglobulin like receptor A5
Database Link:	Entrez Gene 353514 Human A6NI73



[View online »](#)

Background:

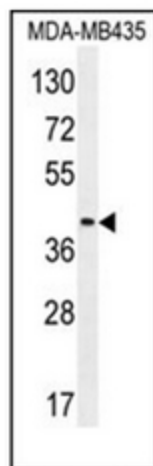
The protein encoded by this gene is a member of the leukocyte immunoglobulin-like receptor (LIR) family. LIR family members are known to have activating and inhibitory functions in leukocytes. Crosslink of this receptor protein on the surface of monocytes has been shown to induce calcium flux and secretion of several proinflammatory cytokines, which suggests the roles of this protein in triggering innate immune responses. This gene is one of the leukocyte receptor genes that form a gene cluster on the chromosomal region 19q13.4. Four alternatively spliced transcript variants encoding distinct isoforms have been described. [provided by RefSeq].

Synonyms:

LILRA5, ILT11, LILRB7, LIR9, LIR-9, ILT-11

Note:

Molecular Weight: 32755 Da

Product images:

Western blot analysis of CD85f / LILRA5 Antibody (N-term) in MDA-MB435 cell line lysates (35ug/lane). This demonstrates the LILRA5 antibody detected the LILRA5 protein (arrow).