

Product datasheet for **AP52479PU-N**

LILRA2 (Center) Rabbit Polyclonal Antibody

Product data:

Product Type:	Primary Antibodies
Applications:	FC, WB
Recommended Dilution:	ELISA: 1/1000. Western Blot: 1/1000. Flow Cytometry: 1/10-1/50.
Reactivity:	Human
Host:	Rabbit
Isotype:	Ig
Clonality:	Polyclonal
Immunogen:	KLH conjugated synthetic peptide between 62-81 amino acids from the Central region of Human CD85h / LILRA2
Specificity:	This antibody recognizes Human CD85h / LILRA2 (Center).
Formulation:	PBS containing 0.09% (W/V) Sodium Azide as preservative State: Aff - Purified State: Liquid purified Ig fraction
Concentration:	lot specific
Purification:	Protein A column, followed by peptide affinity purification
Conjugation:	Unconjugated
Storage:	Store undiluted at 2-8°C for one month or (in aliquots) at -20°C to -80°C for longer. Avoid repeated freezing and thawing.
Stability:	Shelf life: one year from despatch.
Gene Name:	leukocyte immunoglobulin like receptor A2
Database Link:	Entrez Gene 11027 Human Q8N149



[View online »](#)

Background:

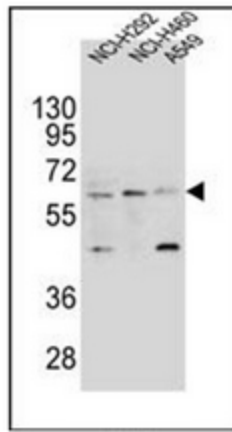
Leukocyte Ig-like receptors (LIRs) are a family of immunoreceptors expressed predominantly on monocytes and B cells and at lower levels on dendritic cells and natural killer (NK) cells. All LIRs in subfamily B have an inhibitory function (see, e.g., LILRB1, MIM 604811). LIRs in subfamily A, with short cytoplasmic domains lacking an immunoreceptor tyrosine-based inhibitory motif (ITIM) and with transmembrane regions containing a charged arginine residue, may initiate stimulatory cascades. One member of subfamily A (LILRA3; MIM 604818) lacks a transmembrane region and is presumed to be a soluble receptor.

Synonyms:

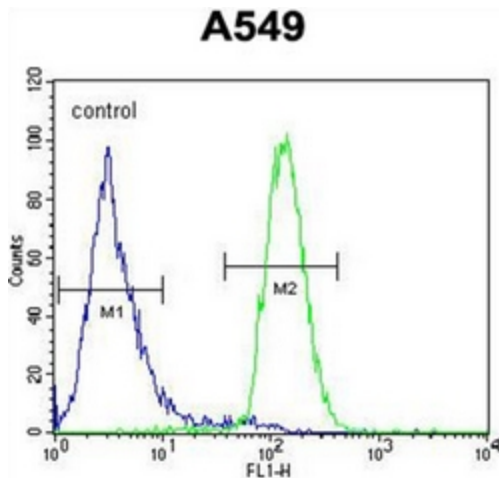
LILRA-2, ILT1, LIR7, LIR-7, ILT-1

Note:

Molecular Weight: 52992 Da

Product images:


Western blot analysis of CD85h / LILRA2 Antibody (Center) in NCI-H292, NCI-H460 and A549 cell line lysates (35ug/lane). This demonstrates the LILRA2 antibody detected the LILRA2 protein (arrow).



Flow cytometric analysis of A549 cells using CD85h / LILRA2 Antibody (Center) (right histogram) compared to a negative control cell (left histogram). FITC-conjugated goat-anti-rabbit secondary antibodies were used for the analysis.