

## Product datasheet for **AP52478PU-N**

### DNA Ligase III (LIG3) (C-term) Rabbit Polyclonal Antibody

#### Product data:

Product Type:	Primary Antibodies
Applications:	WB
Recommended Dilution:	<b>ELISA:</b> 1/1000. <b>Western Blot:</b> 1/100-1/500.
Reactivity:	Human
Host:	Rabbit
Isotype:	Ig
Clonality:	Polyclonal
Immunogen:	KLH conjugated synthetic peptide between 792-822 amino acids from the C-terminal region of Human DNA ligase 3
Specificity:	This antibody recognizes Human DNA ligase 3 (C-term).
Formulation:	PBS containing 0.09% (W/V) Sodium Azide as preservative State: Aff - Purified State: Liquid purified Ig fraction
Concentration:	lot specific
Purification:	Protein A column, followed by peptide affinity purification
Conjugation:	Unconjugated
Storage:	Store undiluted at 2-8°C for one month or (in aliquots) at -20°C for longer. Avoid repeated freezing and thawing.
Stability:	Shelf life: one year from despatch.
Gene Name:	DNA ligase 3
Database Link:	<a href="#">Entrez Gene 3980 Human P49916</a>



[View online »](#)

**Background:**

This gene is a member of the DNA ligase family. Each member of this family encodes a protein that catalyzes the joining of DNA ends but they each have a distinct role in DNA metabolism. The protein encoded by this gene is involved in excision repair and is located in both the mitochondria and nucleus, with translation initiation from the upstream start codon allowing for transport to the mitochondria and translation initiation from a downstream start codon allowing for transport to the nucleus. Additionally, alternate transcriptional splice variants, encoding different isoforms, have been characterized.

**Synonyms:**

LIG3, LIG-3, DNA ligase 3, EC=6.5.1.1, DNA ligase III

**Note:**

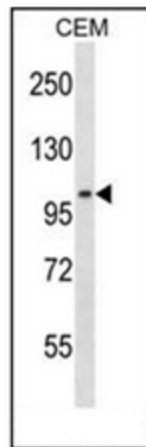
**Molecular Weight:** 112907 Da

**Protein Families:**

Druggable Genome

**Protein Pathways:**

Base excision repair

**Product images:**

Western blot analysis of DNA ligase 3 Antibody (C-term) in CEM cell line lysates (35ug/lane).