

Product datasheet for **AP52477PU-N**

DNA Ligase I (LIG1) (N-term) Rabbit Polyclonal Antibody

Product data:

| | |
|-----------------------|--|
| Product Type: | Primary Antibodies |
| Applications: | WB |
| Recommended Dilution: | ELISA: 1/1000. Western Blot: 1/100-1/500. |
| Reactivity: | Human |
| Host: | Rabbit |
| Isotype: | Ig |
| Clonality: | Polyclonal |
| Immunogen: | KLH conjugated synthetic peptide between 1-30 amino acids from the N-terminal region of Human DNA ligase 1 |
| Specificity: | This antibody recognizes Human DNA ligase 1 (N-term). |
| Formulation: | PBS containing 0.09% (W/V) Sodium Azide as preservative State: Aff - Purified State: Liquid purified Ig fraction |
| Concentration: | lot specific |
| Purification: | Protein A column, followed by peptide affinity purification |
| Conjugation: | Unconjugated |
| Storage: | Store undiluted at 2-8°C for one month or (in aliquots) at -20°C for longer. Avoid repeated freezing and thawing. |
| Stability: | Shelf life: one year from despatch. |
| Gene Name: | DNA ligase 1 |
| Database Link: | Entrez Gene 3978 Human P18858 |
| Background: | LIG1 encodes DNA ligase I, with functions in DNA replication and the base excision repair process. Mutations in LIG1 that lead to DNA ligase I deficiency result in immunodeficiency and increased sensitivity to DNA-damaging agents. |
| Synonyms: | LIG1, LIG-1, DNA ligase 1, EC=6.5.1.1, DNA ligase I |



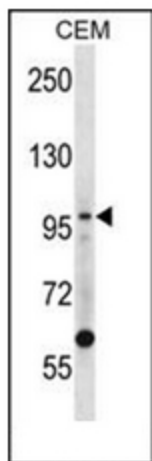
[View online »](#)

Note: **Molecular Weight:** 101736 Da

Protein Families: Druggable Genome

Protein Pathways: Base excision repair, DNA replication, Mismatch repair, Nucleotide excision repair

Product images:



Western blot analysis of DNA liage 1 Antibody (N-term) (in CEM cell line lysates (35ug/lane).