

## Product datasheet for **AP52476PU-N**

### LHX6 (C-term) Rabbit Polyclonal Antibody

#### Product data:

Product Type:	Primary Antibodies
Applications:	WB
Recommended Dilution:	<b>ELISA:</b> 1/1000. <b>Western Blot:</b> 1/100-1/500.
Reactivity:	Human, Mouse
Host:	Rabbit
Isotype:	Ig
Clonality:	Polyclonal
Immunogen:	KLH conjugated synthetic peptide between 333-363 amino acids from the C-terminal region of Human LHX6.
Specificity:	This antibody recognizes Human and Mouse LHX6 (C-term).
Formulation:	PBS containing 0.09% (W/V) Sodium Azide as preservative State: Aff - Purified State: Liquid purified Ig fraction
Concentration:	lot specific
Purification:	Protein A column, followed by peptide affinity purification
Conjugation:	Unconjugated
Storage:	Store undiluted at 2-8°C for one month or (in aliquots) at -20°C for longer. Avoid repeated freezing and thawing.
Stability:	Shelf life: one year from despatch.
Gene Name:	LIM homeobox 6
Database Link:	<a href="#">Entrez Gene 16874 Mouse</a> <a href="#">Entrez Gene 26468 Human</a> <a href="#">Q9UPM6</a>



[View online »](#)

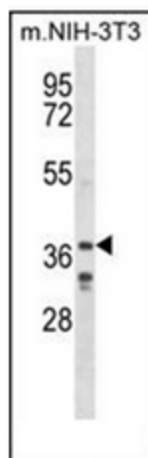
**Background:** This gene encodes a member of a large protein family that contains the LIM domain, a unique cysteine-rich zinc-binding domain. The encoded protein may function as a transcriptional regulator and may be involved in the control of differentiation and development of neural and lymphoid cells. Two alternatively spliced transcript variants encoding distinct isoforms have been described for this gene. Alternatively spliced transcript variants have been identified, but their biological validity has not been determined.

**Synonyms:** LHX6, LHX6.1, LIM/homeobox protein Lhx6, LIM homeobox protein 6, LIM/homeobox protein Lhx6.1

**Note:** **Molecular Weight:** 40045 Da

**Protein Families:** Transcription Factors

### Product images:



Western blot analysis of LHX6 Antibody (C-term) in mouse NIH-3T3 cell line lysates (35ug/lane). This demonstrates the LHX6 antibody detected the LHX6 protein (arrow).