

Product datasheet for **AP52475PU-N**

LHFPL5 (C-term) Rabbit Polyclonal Antibody

Product data:

Product Type:	Primary Antibodies
Applications:	WB
Recommended Dilution:	ELISA: 1/1000. Western Blot: 1/100-1/500.
Reactivity:	Human, Mouse
Host:	Rabbit
Isotype:	Ig
Clonality:	Polyclonal
Immunogen:	KLH conjugated synthetic peptide between 193-222 amino acids from the C-terminal region of Human LHFPL5
Specificity:	This antibody recognizes Human and Mouse LHFPL5 / TMHS (C-term).
Formulation:	PBS containing 0.09% (W/V) Sodium Azide as preservative State: Aff - Purified State: Liquid purified Ig fraction
Concentration:	lot specific
Purification:	Protein A column, followed by peptide affinity purification
Conjugation:	Unconjugated
Storage:	Store undiluted at 2-8°C for one month or (in aliquots) at -20°C for longer. Avoid repeated freezing and thawing.
Stability:	Shelf life: one year from despatch.
Gene Name:	lipoma HMGIC fusion partner-like 5
Database Link:	Entrez Gene 222662 Human Q8TAF8
Background:	This gene is a member of the lipoma HMGIC fusion partner (LHFP) gene family, which is a subset of the superfamily of tetraspan transmembrane protein encoding genes. Mutations in this gene result in deafness in humans, and a mutation in a similar gene in mice results in deafness and vestibular dysfunction with severe degeneration of the organ of Corti. It is proposed to function in hair bundle morphogenesis.



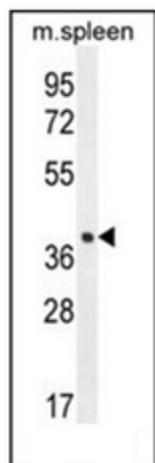
[View online »](#)

Synonyms: DFNB67; dj51008.8; MGC33835; OTTHUMP00000016278; TMHS

Note: **Molecular Weight:** 24201 Da

Protein Families: Transmembrane

Product images:



Western blot analysis of LHFPL5 / TMHS Antibody (C-term) in mouse spleen tissue lysates (35ug/lane). This demonstrates the LHFPL5 antibody detected the LHFPL5 protein (arrow).