

Product datasheet for **AP52471PU-N**

LGALS9B (Center) Rabbit Polyclonal Antibody

Product data:

Product Type:	Primary Antibodies
Applications:	FC, WB
Recommended Dilution:	ELISA: 1/1000. Western Blot: 1/100-1/500. Flow Cytometry: 1/10-1/50.
Reactivity:	Human, Mouse
Host:	Rabbit
Isotype:	Ig
Clonality:	Polyclonal
Immunogen:	KLH conjugated synthetic peptide between 167-196 amino acids from the Central region of Human LGALS9B
Specificity:	This antibody recognizes Human and Mouse LGALS9B (Center).
Formulation:	PBS containing 0.09% (W/V) Sodium Azide as preservative State: Aff - Purified State: Liquid purified Ig fraction
Concentration:	lot specific
Purification:	Protein A column, followed by peptide affinity purification
Conjugation:	Unconjugated
Storage:	Store undiluted at 2-8°C for one month or (in aliquots) at -20°C for longer. Avoid repeated freezing and thawing.
Stability:	Shelf life: one year from despatch.
Gene Name:	galectin 9B
Database Link:	Entrez Gene 284194 Human Q3B8N2

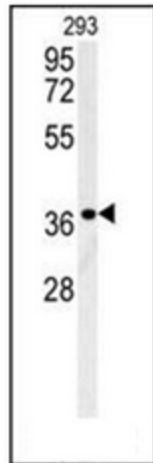


[View online »](#)

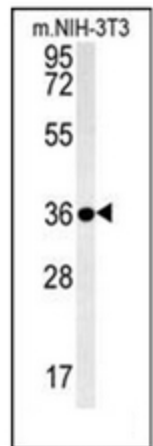
Synonyms: FLJ58146; FLJ75081

Note: **Molecular Weight:** 39660 Da

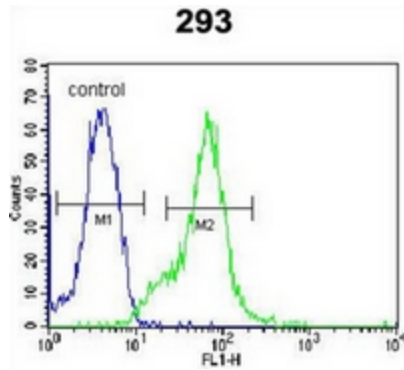
Product images:



Western blot analysis of LGALS9B Antibody (Center) in 293 cell line lysates (35ug/lane). This demonstrates the LGALS9B antibody detected the LGALS9B protein (arrow).



Western blot analysis of LGALS9B Antibody (Center) in mouse NIH-3T3 cell line lysates (35ug/lane). This demonstrates the LGALS9B antibody detected the LGALS9B protein (arrow).



Flow cytometric analysis of 293 cells using LGALS9B Antibody (Center) (right histogram) compared to a negative control cell (left histogram). FITC-conjugated goat-anti-rabbit secondary antibodies were used for the analysis.