

Product datasheet for **AP52469PU-N**

GAL4 (LGALS4) (N-term) Rabbit Polyclonal Antibody

Product data:

Product Type:	Primary Antibodies
Applications:	FC, WB
Recommended Dilution:	ELISA: 1/1000. Western Blot: 1/100-1/500. Flow Cytometry: 1/10-1/50.
Reactivity:	Human
Host:	Rabbit
Isotype:	Ig
Clonality:	Polyclonal
Immunogen:	KLH conjugated synthetic peptide between 77-106 amino acids from the N-terminal region of Human Galectin-4
Specificity:	This antibody recognizes Human Galectin-4 (N-term).
Formulation:	PBS containing 0.09% (W/V) Sodium Azide as preservative State: Aff - Purified State: Liquid purified Ig fraction
Concentration:	lot specific
Purification:	Protein A column, followed by peptide affinity purification
Conjugation:	Unconjugated
Storage:	Store undiluted at 2-8°C for one month or (in aliquots) at -20°C for longer. Avoid repeated freezing and thawing.
Stability:	Shelf life: one year from despatch.
Gene Name:	galectin 4
Database Link:	Entrez Gene 3960 Human P56470
Background:	The galectins are a family of beta-galactoside-binding proteins implicated in modulating cell-cell and cell-matrix interactions. The expression of this gene is restricted to small intestine, colon, and rectum, and it is underexpressed in colorectal cancer.

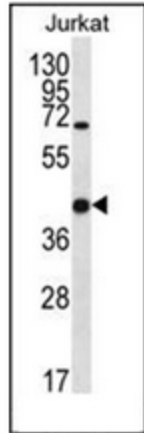


[View online »](#)

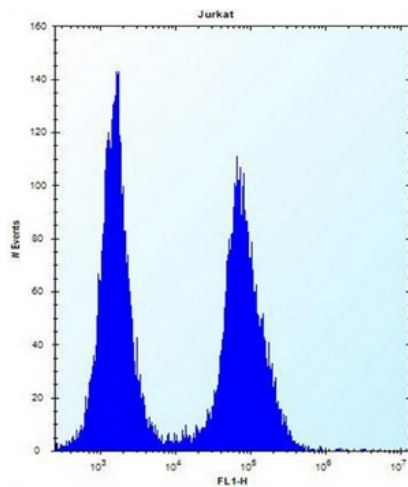
Synonyms: LGALS4, Galectin4, Lactose-binding lectin 4, L-36 lactose-binding protein, L36LBP, Antigen NY-CO-27

Note: **Molecular Weight:** 35941 Da

Product images:



Western blot analysis of Galectin-4 Antibody (N-term) in Jurkat cell line lysates (35ug/lane). This demonstrates the LGALS4 antibody detected the LGALS4 protein (arrow).



Flow cytometric analysis of Jurkat cells using Galectin-4 Antibody (N-term) (right histogram) compared to a negative control cell (left histogram). FITC-conjugated donkey-anti-rabbit secondary antibodies were used for the analysis.