

## Product datasheet for **AP52466PU-N**

### LETM2 (N-term) Rabbit Polyclonal Antibody

#### Product data:

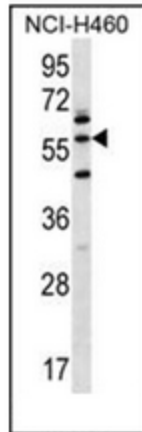
Product Type:	Primary Antibodies
Applications:	FC, IHC, WB
Recommended Dilution:	<b>ELISA:</b> 1/1000. <b>Western Blot:</b> 1/100-1/500. <b>Flow Cytometry:</b> 1/10-1/50. <b>Immunohistochemistry on Paraffin Sections:</b> 1/10-1/50.
Reactivity:	Human
Host:	Rabbit
Isotype:	Ig
Clonality:	Polyclonal
Immunogen:	KLH conjugated synthetic peptide between 108-137 amino acids from the N-terminal region of human LETM2
Specificity:	This antibody recognizes Human LETM2 (N-term).
Formulation:	PBS containing 0.09% (W/V) Sodium Azide as preservative State: Aff - Purified State: Liquid purified Ig fraction
Concentration:	lot specific
Purification:	Protein A column, followed by peptide affinity purification
Conjugation:	Unconjugated
Storage:	Store undiluted at 2-8°C for one month or (in aliquots) at -20°C for longer. Avoid repeated freezing and thawing.
Stability:	Shelf life: one year from despatch.
Gene Name:	leucine zipper and EF-hand containing transmembrane protein 2
Database Link:	<a href="#">Entrez Gene 137994 Human Q2VYF4</a>
Background:	LETM2 contains 1 LETM1 domain.
Synonyms:	FLJ25409



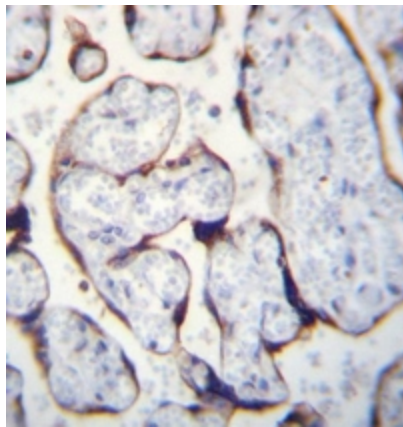
[View online »](#)

Note: **Molecular Weight:** 55921 Da

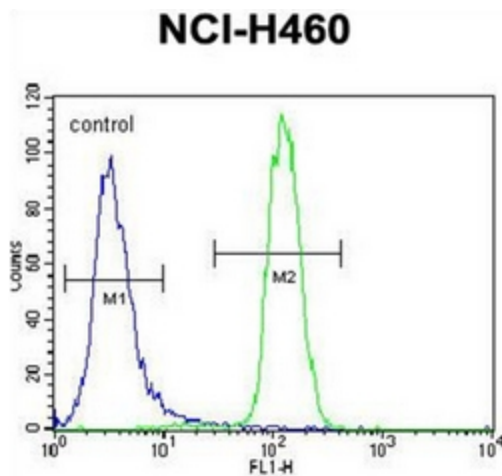
**Product images:**



Western blot analysis of LETM2 Antibody (N-term) in NCI-H460 cell line lysates (35ug/lane). This demonstrates the LETM2 antibody detected the LETM2 protein (arrow)



Immunohistochemistry analysis in formalin fixed and paraffin embedded human placenta reacted with LETM2 Antibody (N-term) tissue followed by peroxidase conjugation of the secondary antibody and DAB staining.



Flow cytometric analysis of NCI-H460 cells using LETM2 Antibody (N-term) (right histogram) compared to a negative control cell (left histogram). FITC-conjugated goat-anti-rabbit secondary antibodies were used for the analysis.