

## Product datasheet for **AP52464PU-N**

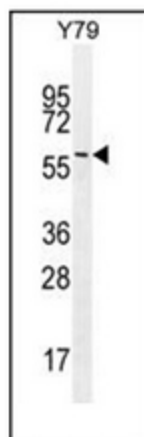
### **LENG9 (N-term) Rabbit Polyclonal Antibody**

#### **Product data:**

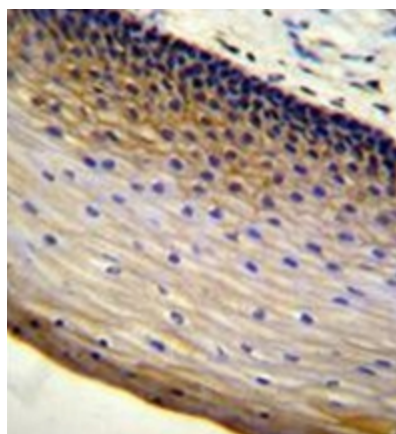
Product Type:	Primary Antibodies
Applications:	IHC, WB
Recommended Dilution:	<b>ELISA:</b> 1/1000. <b>Western Blot:</b> 1/100-1/500. <b>Immunohistochemistry on Paraffin Sections:</b> 1/50-1/100.
Reactivity:	Human
Host:	Rabbit
Isotype:	Ig
Clonality:	Polyclonal
Immunogen:	KLH conjugated synthetic peptide between 112-141 amino acids from the N-terminal region of human LENG9
Specificity:	This antibody recognizes Human LENG9 (N-term).
Formulation:	PBS containing 0.09% (W/V) Sodium Azide as preservative State: Aff - Purified State: Liquid purified Ig fraction
Concentration:	lot specific
Purification:	Protein A column, followed by peptide affinity purification
Conjugation:	Unconjugated
Storage:	Store undiluted at 2-8°C for one month or (in aliquots) at -20°C for longer. Avoid repeated freezing and thawing.
Stability:	Shelf life: one year from despatch.
Gene Name:	leukocyte receptor cluster (LRC) member 9
Database Link:	<a href="#">Entrez Gene 94059 Human Q96B70</a>
Synonyms:	LENG9
Note:	<b>Molecular Weight:</b> 53167 Da



[View online »](#)

**Product images:**

Western blot analysis of LENG9 Antibody (N-term) in Y79 cell line lysates (35ug/lane). This demonstrates the LENG9 antibody detected the LENG9 protein (arrow).



Immunohistochemistry analysis in formalin fixed and paraffin embedded human cervical tissue reacted with LENG9 Antibody (N-term) followed by peroxidase conjugation of the secondary antibody and DAB staining.