

Product datasheet for **AP52462PU-N**

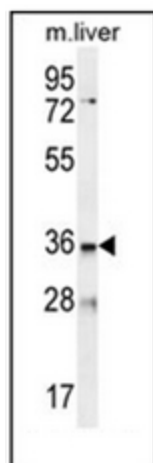
LDLRAD3 (C-term) Rabbit Polyclonal Antibody

Product data:

Product Type:	Primary Antibodies
Applications:	WB
Recommended Dilution:	ELISA: 1/1000. Western Blot: 1/100-1/500.
Reactivity:	Human, Mouse
Host:	Rabbit
Isotype:	Ig
Clonality:	Polyclonal
Immunogen:	KLH conjugated synthetic peptide between 314-345 amino acids from the C-terminal region of Human LDLRAD3
Specificity:	This antibody recognizes Human and Mouse LDLRAD3 (C-term).
Formulation:	PBS containing 0.09% (W/V) Sodium Azide as preservative State: Aff - Purified State: Liquid purified Ig fraction
Concentration:	lot specific
Purification:	Protein A column, followed by peptide affinity purification
Conjugation:	Unconjugated
Storage:	Store undiluted at 2-8°C for one month or (in aliquots) at -20°C for longer. Avoid repeated freezing and thawing.
Stability:	Shelf life: one year from despatch.
Gene Name:	low density lipoprotein receptor class A domain containing 3
Database Link:	Entrez Gene 241576 Mouse Entrez Gene 143458 Human Q86YD5
Synonyms:	LDLRAD3
Note:	Molecular Weight: 37419 Da
Protein Families:	Druggable Genome, Transmembrane



[View online »](#)

Product images:

Western blot analysis of LDLRAD3 Antibody (C-term) in mouse liver tissue lysates (35ug/lane). This demonstrates the LDLRAD3 antibody detected the LDLRAD3 protein (arrow).