

Product datasheet for **AP52460PU-N**

LDHAL6A (Center) Rabbit Polyclonal Antibody

Product data:

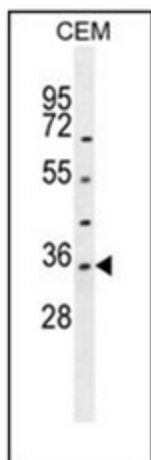
Product Type:	Primary Antibodies
Applications:	WB
Recommended Dilution:	ELISA: 1/1000. Western Blot: 1/100-1/500.
Reactivity:	Human
Host:	Rabbit
Isotype:	Ig
Clonality:	Polyclonal
Immunogen:	KLH conjugated synthetic peptide between 157-187 amino acids from the Central region of Human LDHAL6A
Specificity:	This antibody recognizes Human LDHAL6A (Center).
Formulation:	PBS containing 0.09% (W/V) Sodium Azide as preservative State: Aff - Purified State: Liquid purified Ig fraction
Concentration:	lot specific
Purification:	Protein A column, followed by peptide affinity purification
Conjugation:	Unconjugated
Storage:	Store undiluted at 2-8°C for one month or (in aliquots) at -20°C for longer. Avoid repeated freezing and thawing.
Stability:	Shelf life: one year from despatch.
Gene Name:	lactate dehydrogenase A like 6A
Database Link:	Entrez Gene 160287 Human Q6ZMR3
Background:	Displays an lactate dehydrogenase activity. Significantly increases the transcriptional activity of JUN, when overexpressed.
Synonyms:	LDHAL6A, LDHL2, L-lactate dehydrogenase A-like 6A, EC=1.1.1.27
Note:	Molecular Weight: 36507 Da



[View online »](#)

Protein Pathways: Cysteine and methionine metabolism, Glycolysis / Gluconeogenesis, Metabolic pathways, Propanoate metabolism, Pyruvate metabolism

Product images:



Western blot analysis of LDHAL6A Antibody (Center) in CEM cell line lysates (35ug/lane). This demonstrates the LDHAL6A antibody detected the LDHAL6A protein (arrow).