

Product datasheet for **AP52459PU-N**

LDHA (Center) Rabbit Polyclonal Antibody

Product data:

Product Type:	Primary Antibodies
Applications:	FC, IHC, WB
Recommended Dilution:	ELISA: 1/1000. Western Blot: 1/100-1/500. Flow Cytometry: 1/10-1/50. Immunohistochemistry on Paraffin Sections: 1/50-1/100.
Reactivity:	Human
Host:	Rabbit
Isotype:	Ig
Clonality:	Polyclonal
Immunogen:	KLH conjugated synthetic peptide between 161~190 amino acids from the Central region of Human LDHA
Specificity:	This antibody recognizes Human LDHA (Center).
Formulation:	PBS containing 0.09% (W/V) Sodium Azide as preservative State: Aff - Purified State: Liquid purified Ig fraction
Concentration:	lot specific
Purification:	Protein A column, followed by peptide affinity purification
Conjugation:	Unconjugated
Storage:	Store undiluted at 2-8°C for one month or (in aliquots) at -20°C for longer. Avoid repeated freezing and thawing.
Stability:	Shelf life: one year from despatch.
Gene Name:	lactate dehydrogenase A
Database Link:	Entrez Gene 3939 Human P00338



[View online »](#)

Background: LDHA catalyzes the conversion of L-lactate and NAD to pyruvate and NADH in the final step of anaerobic glycolysis. The protein is found predominantly in muscle tissue and belongs to the lactate dehydrogenase family. Mutations in this gene have been linked to exertional myoglobinuria.

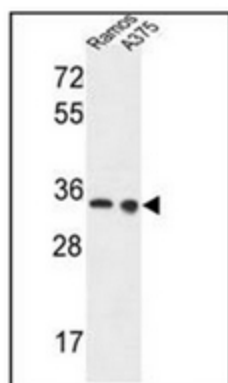
Synonyms: LDH-A, L-lactate dehydrogenase A chain, LDH-M, PIG19, NY-REN-59

Note: **Molecular Weight:** 36689 Da

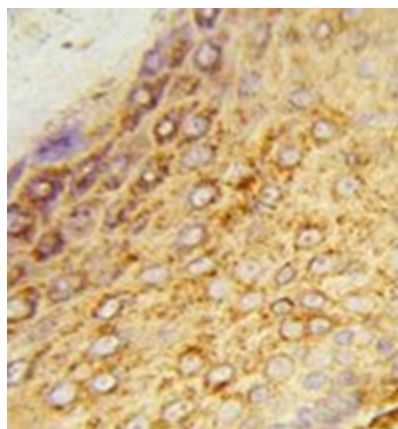
Protein Families: Druggable Genome

Protein Pathways: Cysteine and methionine metabolism, Glycolysis / Gluconeogenesis, Metabolic pathways, Propanoate metabolism, Pyruvate metabolism

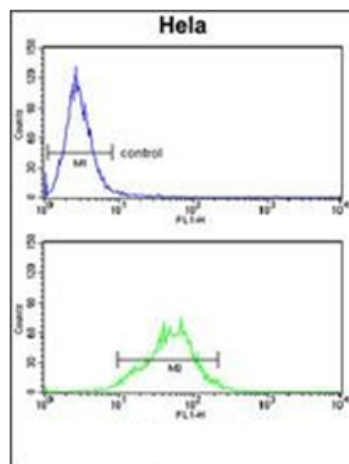
Product images:



Western blot analysis of LDHA Antibody (Center) in Ramos, A375 cell line lysates (35ug/lane). This demonstrates the LDHA antibody detected the LDHA protein (arrow).



Immunohistochemistry analysis in formalin-fixed and paraffin-embedded human skin tissue reacted with LDHA Antibody (Center) which was peroxidase-conjugated to the secondary antibody, followed by DAB staining.



Flow cytometry analysis of HeLa cells using LDHA Antibody (Center) (bottom histogram) compared to a negative control cell (top histogram). FITC-conjugated goat-anti-rabbit secondary antibodies were used for the analysis.