

Product datasheet for **AP52458PU-N**

LDB1 (C-term) Rabbit Polyclonal Antibody

Product data:

Product Type:	Primary Antibodies
Applications:	WB
Recommended Dilution:	ELISA: 1/1000. Western Blot: 1/100-1/500.
Reactivity:	Human
Host:	Rabbit
Isotype:	Ig
Clonality:	Polyclonal
Immunogen:	KLH conjugated synthetic peptide between 350-379 amino acids from the C-terminal region of human LDB1
Specificity:	This antibody recognizes Human LDB1 (C-term).
Formulation:	PBS containing 0.09% (W/V) Sodium Azide as preservative State: Aff - Purified State: Liquid purified Ig fraction
Concentration:	lot specific
Purification:	Protein A column, followed by peptide affinity purification
Conjugation:	Unconjugated
Storage:	Store undiluted at 2-8°C for one month or (in aliquots) at -20°C for longer. Avoid repeated freezing and thawing.
Stability:	Shelf life: one year from despatch.
Gene Name:	LIM domain binding 1
Database Link:	Entrez Gene 8861 Human Q86U70



[View online »](#)

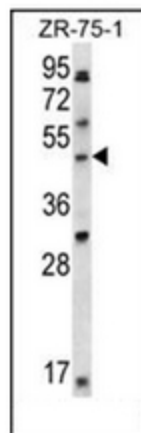
Background: LDB1 binds to the LIM domain of a wide variety of LIM domain-containing transcription factors. May regulate the transcriptional activity of LIM-containing proteins by determining specific partner interactions. May play a role in the development of motor neurons. Acts synergistically with LHX1/LIM1 in axis formation and activation of gene expression. Acts with LMO2 in the regulation of red blood cell development, maintaining erythroid precursors in an immature state (By similarity).

Synonyms: LDB1, CLIM2, LIM domain-binding protein 1, Nuclear LIM interactor, Carboxyl-terminal LIM domain-binding protein 2, CLIM-2, LIM domain-binding factor CLIM2, hLdb1

Note: **Molecular Weight:** 46533 Da

Protein Families: Transcription Factors

Product images:



Western blot analysis of LDB1 Antibody (C-term) in ZR-75-1 cell line lysates (35ug/lane). This demonstrates the LDB1 antibody detected the LDB1 protein (arrow).