

## Product datasheet for **AP52457PU-N**

### LCOR (C-term) Rabbit Polyclonal Antibody

#### Product data:

Product Type:	Primary Antibodies
Applications:	WB
Recommended Dilution:	<b>ELISA:</b> 1/1000. <b>Western Blot:</b> 1/100-1/500.
Reactivity:	Human
Host:	Rabbit
Isotype:	Ig
Clonality:	Polyclonal
Immunogen:	KLH conjugated synthetic peptide between 329-358 amino acids from the C-terminal region of Human LCOR
Specificity:	This antibody recognizes Human LCOR (C-term).
Formulation:	PBS containing 0.09% (W/V) Sodium Azide as preservative State: Aff - Purified State: Liquid purified Ig fraction
Concentration:	lot specific
Purification:	Protein A column, followed by peptide affinity purification
Conjugation:	Unconjugated
Storage:	Store undiluted at 2-8°C for one month or (in aliquots) at -20°C for longer. Avoid repeated freezing and thawing.
Stability:	Shelf life: one year from despatch.
Gene Name:	ligand dependent nuclear receptor corepressor
Database Link:	<a href="#">Entrez Gene 84458 Human</a> <a href="#">Q96JN0</a>
Background:	LCOR is a transcriptional corepressor widely expressed in fetal and adult tissues that is recruited to agonist-bound nuclear receptors through a single LxxLL motif, also referred to as a nuclear receptor (NR) box (Fernandes et al., 2003 [PubMed 12535528]).
Synonyms:	Ligand-dependent corepressor, MLR2, KIAA1795

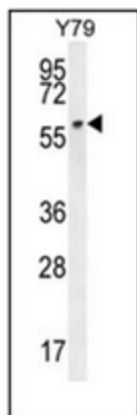


[View online »](#)

Note: **Molecular Weight:** 47007 Da

Protein Families: Druggable Genome

### Product images:



Western blot analysis of LCOR Antibody (C-term) in Y79 cell line lysates (35ug/lane). This demonstrates the LCOR antibody detected the LCOR protein (arrow)