

Product datasheet for **AP52455PU-N**

LCN9 (N-term) Rabbit Polyclonal Antibody

Product data:

Product Type:	Primary Antibodies
Applications:	FC, WB
Recommended Dilution:	ELISA: 1/1000. Western Blot: 1/100-1/500. Flow Cytometry: 1/10-1/50.
Reactivity:	Human
Host:	Rabbit
Isotype:	Ig
Clonality:	Polyclonal
Immunogen:	KLH conjugated synthetic peptide between 43-72 amino acids from the N-terminal region of Human Lipocalin-9
Specificity:	This antibody recognizes Human Lipocalin-9 (N-term).
Formulation:	PBS containing 0.09% (W/V) Sodium Azide as preservative State: Aff - Purified State: Liquid purified Ig fraction
Concentration:	lot specific
Purification:	Protein A column, followed by peptide affinity purification
Conjugation:	Unconjugated
Storage:	Store undiluted at 2-8°C for one month or (in aliquots) at -20°C for longer. Avoid repeated freezing and thawing.
Stability:	Shelf life: one year from despatch.
Gene Name:	lipocalin 9
Database Link:	Entrez Gene 392399 Human Q8WX39
Background:	Members of the lipocalin family, such as LCN9, have a common structure consisting of an 8-stranded antiparallel beta-barrel that forms a cup-shaped ligand-binding pocket or calyx. Lipocalins generally bind small hydrophobic ligands and transport them to specific cells (Suzuki et al., 2004 [PubMed 15363845]).



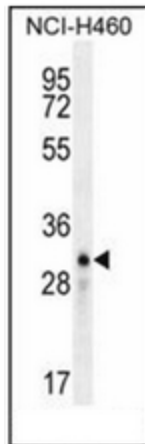
[View online »](#)

Synonyms: LCN9

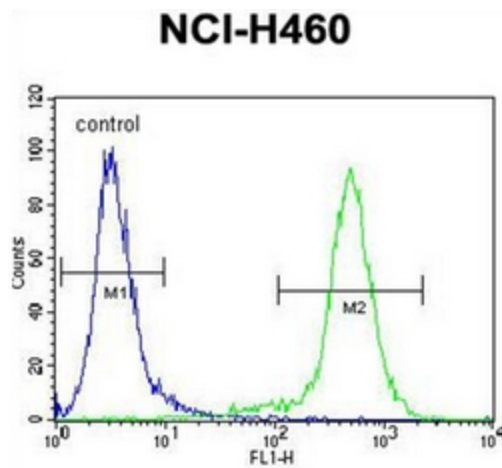
Note: **Molecular Weight:** 21808 Da

Protein Families: Secreted Protein

Product images:



Western blot analysis of Lipocalin-9 Antibody (N-term) in NCI-H460 cell line lysates (35ug/lane). This demonstrates the LCN9 antibody detected the LCN9 protein (arrow).



Flow cytometric analysis of NCI-H460 cells using Lipocalin-9 Antibody (N-term) (right histogram) compared to a negative control cell (left histogram). FITC-conjugated goat-anti-rabbit secondary antibodies were used for the analysis.