

## Product datasheet for **AP52454PU-N**

### LCN8 (C-term) Rabbit Polyclonal Antibody

#### Product data:

Product Type:	Primary Antibodies
Applications:	WB
Recommended Dilution:	<b>ELISA:</b> 1/1000. <b>Western Blot:</b> 1/100-1/500.
Reactivity:	Human
Host:	Rabbit
Isotype:	Ig
Clonality:	Polyclonal
Immunogen:	KLH conjugated synthetic peptide between 110-140 amino acids from the C-terminal region of Human Lipocalin-8
Specificity:	This antibody recognizes Human Lipocalin-8 (C-term).
Formulation:	PBS containing 0.09% (W/V) Sodium Azide as preservative State: Aff - Purified State: Liquid purified Ig fraction
Concentration:	lot specific
Purification:	Protein A column, followed by peptide affinity purification
Conjugation:	Unconjugated
Storage:	Store undiluted at 2-8°C for one month or (in aliquots) at -20°C for longer. Avoid repeated freezing and thawing.
Stability:	Shelf life: one year from despatch.
Gene Name:	lipocalin 8
Database Link:	<a href="#">Entrez Gene 138307 Human Q6JVE9</a>
Background:	Members of the lipocalin family, such as LCN8, have a common structure consisting of an 8-stranded antiparallel beta-barrel that forms a cup-shaped ligand-binding pocket or calyx. Lipocalins generally bind small hydrophobic ligands and transport them to specific cells (Suzuki et al., 2004 [PubMed 15363845]).
Synonyms:	LCN8, LCN5

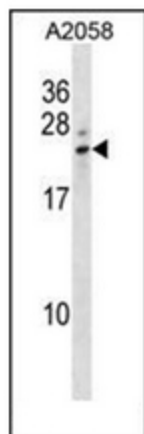


[View online »](#)

Note: **Molecular Weight:** 19080 Da

Protein Families: Secreted Protein

### Product images:



Western blot analysis of Lipocalin-8 Antibody (C-term) in A2058 cell line lysates (35ug/lane). This demonstrates the LCN8 antibody detected the LCN8 protein (arrow).