

Product datasheet for **AP52453PU-N**

LCN10 (Center) Rabbit Polyclonal Antibody

Product data:

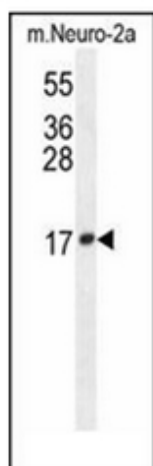
Product Type:	Primary Antibodies
Applications:	FC, WB
Recommended Dilution:	ELISA: 1/1000. Western Blot: 1/100-1/500. Flow Cytometry: 1/10-1/50.
Reactivity:	Human, Mouse
Host:	Rabbit
Isotype:	Ig
Clonality:	Polyclonal
Immunogen:	KLH conjugated synthetic peptide between 101-131 amino acids from the Central region of human LCN10
Specificity:	This antibody recognizes Human and Mouse LCN10 (Center).
Formulation:	PBS containing 0.09% (W/V) Sodium Azide as preservative State: Aff - Purified State: Liquid purified Ig fraction
Concentration:	lot specific
Purification:	Protein A column, followed by peptide affinity purification
Conjugation:	Unconjugated
Storage:	Store undiluted at 2-8°C for one month or (in aliquots) at -20°C for longer. Avoid repeated freezing and thawing.
Stability:	Shelf life: one year from despatch.
Gene Name:	Homo sapiens lipocalin 10 (LCN10)
Database Link:	Entrez Gene 414332 Human Q6JVE6
Background:	May play a role in male fertility. May act as a retinoid carrier protein within the epididymis.
Synonyms:	Epididymal-specific lipocalin-10
Note:	Molecular Weight: 20759 Da



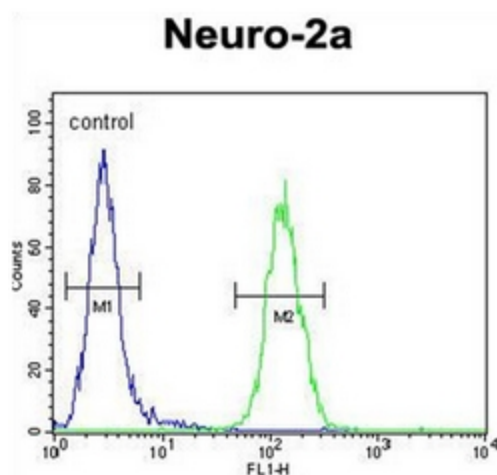
[View online »](#)

Protein Families: Secreted Protein, Transmembrane

Product images:



Western blot analysis of LCN10 Antibody (Center) in mouse Neuro-2a cell line lysates (35ug/lane). This demonstrates the LCN10 antibody detected the LCN10 protein (arrow).



Flow cytometric analysis of Neuro-2a cells using LCN10 Antibody (Center) (right histogram) compared to a negative control cell (left histogram). FITC-conjugated goat-anti-rabbit secondary antibodies were used for the analysis.