

## Product datasheet for **AP52449PU-N**

### **C21ORF13 (LCA5L) (C-term) Rabbit Polyclonal Antibody**

#### Product data:

Product Type:	Primary Antibodies
Applications:	IHC, WB
Recommended Dilution:	<b>ELISA:</b> 1/1000. <b>Western blotting:</b> 1/100-1/500. <b>Immunohistochemistry on Paraffin Sections:</b> 1/50-1/100.
Reactivity:	Human, Mouse
Host:	Rabbit
Isotype:	Ig
Clonality:	Polyclonal
Immunogen:	KLH conjugated synthetic peptide between 387-416 amino acids from the C-terminal region of Human LCA5L
Specificity:	This antibody recognizes LCA5L (C-term).
Formulation:	PBS State: Aff - Purified State: Liquid purified Ig fraction Preservative: 0.09% (W/V) Sodium Azide
Concentration:	lot specific
Purification:	Affinity Chromatography on Protein A
Conjugation:	Unconjugated
Storage:	Store the antibody undiluted at 2-8°C for one month or (in aliquots) at -20°C for longer. Avoid repeated freezing and thawing.
Stability:	Shelf life: one year from despatch.
Predicted Protein Size:	76505 Da
Gene Name:	LCA5L, lebercilin like
Database Link:	<a href="#">Entrez Gene 150082 Human O95447</a>



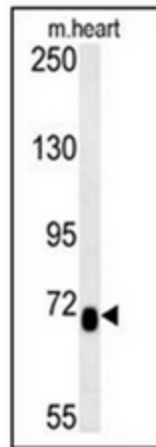
[View online »](#)

**Background:**

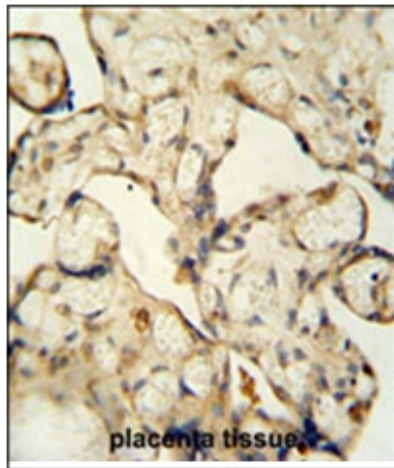
Leber congenital amaurosis (LCA) is one of the most common causes of hereditary blindness or severe visual impairment in infants. Mutations in several genes with diverse functions mapping to two loci have been implicated in LCA causation. These proteins are involved in processes such as photoreceptor development and maintenance, phototransduction, vitamin A metabolism and protein trafficking. LCA5, also known as Lebercilin, is a ciliary protein that is widely expressed during development and localizes to the connecting cilia of photoreceptors and to the microtubules, centrioles and primary cilia of cultured mammalian cells. The Leber congenital amaurosis 5-like protein (LCA5L) is a 670 amino acid protein that belongs to the LCA5 family.

**Synonyms:**

LCA5L, C21orf13

**Product images:**

Western blot analysis in mouse heart tissue lysates (15ug/lane) using LCA5L Antibody (C-term). This demonstrates the LCA5L antibody detected LCA5L protein (arrow).



Immunohistochemistry analysis in formalin fixed and paraffin embedded human placenta tissue using LCA5L antibody (C-term) followed by peroxidase conjugation of the secondary antibody and DAB staining. This data demonstrates the use of the LCA5L antibody (C-term) for immunohistochemistry. Clinical relevance has not been evaluated.