

Product datasheet for **AP52448PU-N**

NTAL (LAT2) (Center) Rabbit Polyclonal Antibody

Product data:

Product Type:	Primary Antibodies
Applications:	WB
Recommended Dilution:	Western blot: 1/100-1/500. Enzyme immunoassay: 1/1000.
Reactivity:	Human
Host:	Rabbit
Isotype:	Ig
Clonality:	Polyclonal
Immunogen:	Synthetic peptide - KLH conjugated - corresponding to the central region (between 106-135aa) of human LAT2 / WBSCR15.
Specificity:	This antibody recognizes LAT2 / WBSCR15.
Formulation:	PBS with 0.09% (W/V) Sodium azide State: Aff - Purified State: Liquid purified Ig fraction
Concentration:	lot specific
Purification:	Purified through a Protein A column followed by peptide affinity purification
Conjugation:	Unconjugated
Storage:	Store undiluted at 2-8°C for one month or (in aliquots) at -20°C for longer. Avoid repeated freezing and thawing.
Stability:	Shelf life: one year from despatch.
Gene Name:	linker for activation of T-cells family member 2
Database Link:	Entrez Gene 7462 Human Q9GZY6
Background:	The LAT2 gene is one of the contiguous genes at 7q11.23 commonly deleted in Williams syndrome, a multisystem developmental disorder. This gene consists of at least 14 exons, and its alternative splicing generates 3 transcript variants, all encoding the same protein.
Synonyms:	LAB, NTAL, WBS15, WBSCR5, HSPC046

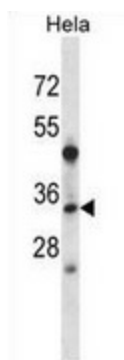


[View online »](#)

Note: **Molecular Weight:** 26550 Da

Protein Families: Transmembrane

Product images:



Western blot analysis in HeLa cell line lysates (35ug/lane) using LAT2 / WBSCR15 antibody. This demonstrates the LAT2 antibody detected the LAT2 protein (arrow).