

Product datasheet for **AP52446PU-N**

LASP1 (Center) Rabbit Polyclonal Antibody

Product data:

Product Type:	Primary Antibodies
Applications:	WB
Recommended Dilution:	ELISA: 1/1000. Western Blot: 1/100-1/500.
Reactivity:	Human
Host:	Rabbit
Isotype:	Ig
Clonality:	Polyclonal
Immunogen:	KLH conjugated synthetic peptide between 119-148 amino acids from the Central region of Human LASP1
Specificity:	This antibody recognizes Human LASP1 (Center).
Formulation:	PBS containing 0.09% (W/V) Sodium Azide as preservative State: Aff - Purified State: Liquid purified Ig fraction
Concentration:	lot specific
Purification:	Protein A column, followed by peptide affinity purification
Conjugation:	Unconjugated
Storage:	Store undiluted at 2-8°C for one month or (in aliquots) at -20°C for longer. Avoid repeated freezing and thawing.
Stability:	Shelf life: one year from despatch.
Gene Name:	LIM and SH3 protein 1
Database Link:	Entrez Gene 3927 Human Q14847
Background:	This gene encodes a member of a LIM protein subfamily characterized by a LIM motif and a domain of Src homology region 3. The encoded protein functions as an actin-binding protein and possibly in cytoskeletal organization.
Synonyms:	LASP-1, MLN50

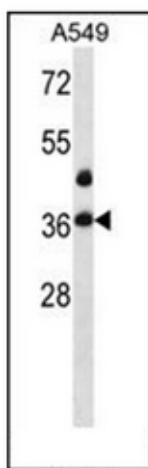


[View online »](#)

Note: **Molecular Weight:** 29717 Da

Protein Families: Druggable Genome

Product images:



Western blot analysis of LASP1 Antibody (Center) in A549 cell line lysates (35ug/lane). This demonstrates the LASP1 antibody detected the LASP1 protein (arrow).