

Product datasheet for **AP52443PU-N**

LARP7 (C-term) Rabbit Polyclonal Antibody

Product data:

Product Type:	Primary Antibodies
Applications:	WB
Recommended Dilution:	ELISA: 1/1000. Western Blot: 1/100-1/500.
Reactivity:	Human
Host:	Rabbit
Isotype:	Ig
Clonality:	Polyclonal
Immunogen:	KLH conjugated synthetic peptide between 526-556 amino acids from the C-terminal region of Human LARP7.
Specificity:	This antibody recognizes Human LLARP7 (C-term).
Formulation:	PBS containing 0.09% (W/V) Sodium Azide as preservative State: Aff - Purified State: Liquid purified Ig fraction
Concentration:	lot specific
Purification:	Protein A column, followed by peptide affinity purification
Conjugation:	Unconjugated
Storage:	Store undiluted at 2-8°C for one month or (in aliquots) at -20°C for longer. Avoid repeated freezing and thawing.
Stability:	Shelf life: one year from despatch.
Gene Name:	La ribonucleoprotein domain family member 7
Database Link:	Entrez Gene 51574 Human Q4G0J3
Background:	LARP7 is a negative transcriptional regulator of polymerase II genes, acting by means of the 7SK RNP system. Within the 7SK RNP complex, the positive transcription elongation factor b (P-TEFb) is sequestered in an inactive form, preventing RNA polymerase II phosphorylation and subsequent transcriptional elongation.

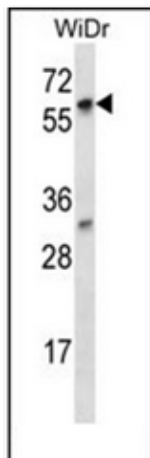


[View online »](#)

Synonyms: LARP7, La-related protein 7, La ribonucleoprotein domain family member 7, P-TEFb-interaction protein for 7SK stability, PIP7S

Note: **Molecular Weight:** 66899 Da

Product images:



Western blot analysis of LARP7 Antibody (C-term) in WiDr cell line lysates (35ug/lane). This demonstrates the LARP7 antibody detected the LARP7 protein (arrow).