

Product datasheet for **AP52442PU-N**

LARP6 (N-term) Rabbit Polyclonal Antibody

Product data:

Product Type:	Primary Antibodies
Applications:	FC, IHC, WB
Recommended Dilution:	Flow cytometry: 1/10-1/50. Immunohistochemistry on Paraffin sections: 1/50-1/100. Western blot: 1/100-1/500. Enzyme immunoassay: 1/1000.
Reactivity:	Human
Host:	Rabbit
Isotype:	Ig
Clonality:	Polyclonal
Immunogen:	Synthetic peptide - KLH conjugated - corresponding to the N-terminal region (between 10-39aa) of human LARP6.
Specificity:	This antibody recognizes LARP6.
Formulation:	PBS with 0.09% (W/V) Sodium azide State: Aff - Purified State: Liquid purified Ig fraction
Concentration:	lot specific
Purification:	Purified through a Protein A column followed by peptide affinity purification
Conjugation:	Unconjugated
Storage:	Store undiluted at 2-8°C for one month or (in aliquots) at -20°C for longer. Avoid repeated freezing and thawing.
Stability:	Shelf life: one year from despatch.
Gene Name:	La ribonucleoprotein domain family member 6
Database Link:	Entrez Gene 55323 Human Q9BRS8
Background:	LARP6 is a member of the La ribonucleoprotein domain family, which all contain one characteristic La motif. LARP6 shuttles between the cytoplasm and nucleus. It is proposed that members of this family play a role in translation and mRNA stability.

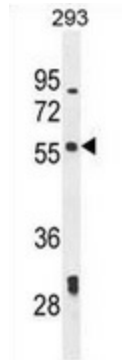


[View online »](#)

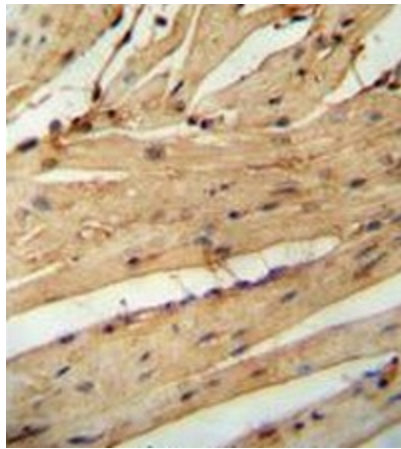
Synonyms: LARP6, La-related protein 6, La ribonucleoprotein domain family member 6, Acheron, Achn

Note: **Molecular Weight:** 54737 Da

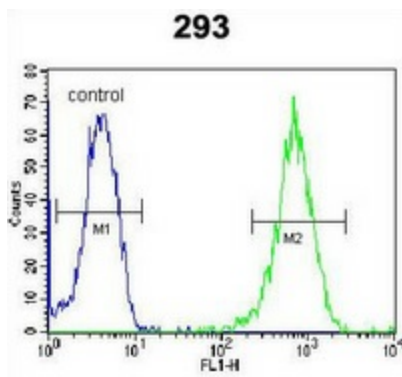
Product images:



Western blot analysis in 293 cell line lysates (35ug/lane) using LARP6 antibody. (N-term). This demonstrates the LARP6 antibody detected the LARP6 protein (arrow).



Immunohistochemistry analysis in mouse heart tissue (Formalin-fixed, Paraffin-embedded) using LARP6 antibody. (N-term), followed by peroxidase conjugation of the secondary antibody and DAB staining. This data demonstrates the use of the LARP6 antibody for IHC. Clinical relevance has not been evaluated.



Flow cytometric analysis of 293 cells (right histogram) compared to a negative control cell (left histogram) using LARP6 antibody. (N-term), followed by FITC-conjugated goat-anti-rabbit secondary antibodies.