

Product datasheet for **AP52440PU-N**

LAPTM5 (N-term) Rabbit Polyclonal Antibody

Product data:

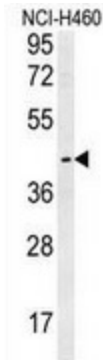
Product Type:	Primary Antibodies
Applications:	FC, IHC, WB
Recommended Dilution:	Flow Cytometry: 1/10-1/50. Immunohistochemistry on Paraffin Sections: 1/50-1/100. Western blotting: 1/1000.
Reactivity:	Human
Host:	Rabbit
Isotype:	Ig
Clonality:	Polyclonal
Immunogen:	Synthetic peptide - KLH conjugated - corresponding to the N-terminal region (between 23-49aa) of human LAPTM5.
Specificity:	This antibody detects Human LAPTM5 at N-term.
Formulation:	PBS with 0.09% (W/V) Sodium Azide. State: Aff - Purified State: Liquid purified Ig fraction
Concentration:	lot specific
Purification:	Purified through a protein A column; followed by peptide affinity purification.
Conjugation:	Unconjugated
Storage:	Store the antibody undiluted at 2-8°C for one month or (in aliquots) at -20°C for longer. Avoid repeated freezing and thawing.
Stability:	Shelf life: one year from despatch.
Gene Name:	lysosomal protein transmembrane 5
Database Link:	Entrez Gene 7805 Human Q13571
Synonyms:	LAPTM5, KIAA0085, Retinoic acid-inducible E3 protein
Note:	Molecular Weight: 29937 Da
Protein Families:	Transmembrane



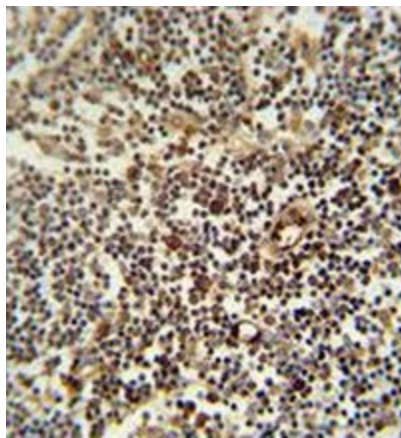
[View online »](#)

Protein Pathways: Lysosome

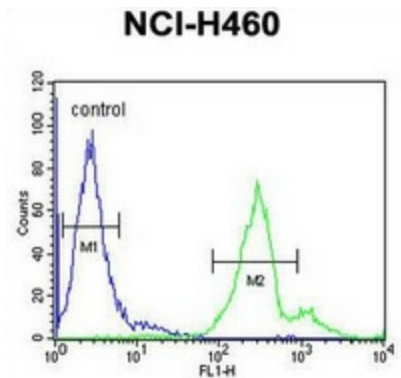
Product images:



Western blot analysis in NCI-H460 cell line lysates (35ug/lane) using LAPTM5 antibody. (N-term). This demonstrates the LAPTM5 antibody detected the LAPTM5 protein (arrow).



Immunohistochemistry analysis in human lymph node (formalin-fixed, paraffin-embedded) using LAPTM5 antibody. (N-term), followed by peroxidase conjugation of the secondary antibody and DAB staining. This data demonstrates the use of the LAPTM5 antibody for IHC. Clinical relevance has not been evaluated.



Flow cytometric analysis of NCI-H460 cells (right histogram) compared to a negative control cell (left histogram) using LAPTM5 antibody. (N-term), followed by FITC-conjugated goat-anti-rabbit secondary antibodies.