

Product datasheet for **AP52439PU-N**

alpha Lactalbumin (LALBA) (Center) Rabbit Polyclonal Antibody

Product data:

Product Type:	Primary Antibodies
Applications:	WB
Recommended Dilution:	This antibody is suitable for Enzyme immunoassay and Western blotting. The suggested dilution is: Western blotting: 1/100-1/500.
Reactivity:	Human
Host:	Rabbit
Isotype:	Ig
Clonality:	Polyclonal
Immunogen:	Synthetic peptide - KLH conjugated - corresponding to the central region (between 37-68aa) of human LALBA.
Specificity:	This antibody recognizes LALBA.
Formulation:	PBS with 0.09% (W/V) Sodium Azide State: Aff - Purified State: Liquid purified Ig fraction
Concentration:	lot specific
Purification:	Purified through a protein A column followed by peptide affinity purification
Conjugation:	Unconjugated
Storage:	Store the antibody undiluted at 2-8°C for one month or (in aliquots) at -20°C for longer. Avoid repeated freezing and thawing.
Stability:	Shelf life: one year from despatch.
Gene Name:	lactalbumin alpha
Database Link:	Entrez Gene 3906 Human P00709



[View online »](#)

Background: The LALBA gene encodes alpha-lactalbumin, a principal protein of milk. Alpha-lactalbumin forms the regulatory subunit of the lactose synthase (LS) heterodimer and beta 1,4-galactosyltransferase (beta4Gal-T1) forms the catalytic component. Together, these proteins enable LS to produce lactose by transferring galactose moieties to glucose. As a monomer, alpha-lactalbumin strongly binds calcium and zinc ions and may possess bactericidal or antitumor activity. A folding variant of alpha-lactalbumin, called HAMLET, likely induces apoptosis in tumor and immature cells.

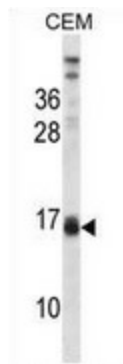
Synonyms: LALBA, LYZL7, Alpha-lactalbumin, Lactose synthase B protein, Lysozyme-like protein 7

Note: **Molecular Weight:** 16225 Da

Protein Families: Secreted Protein

Protein Pathways: Galactose metabolism

Product images:



Western blot analysis in CEM cell line lysates (35ug/lane) using LALBA antibody. This demonstrates the LALBA antibody detected the LALBA protein (arrow).