

Product datasheet for **AP52438PU-N**

LAD1 (N-term) Rabbit Polyclonal Antibody

Product data:

Product Type:	Primary Antibodies
Applications:	IHC, WB
Recommended Dilution:	Western blot: 1/1000. Immunohistochemistry on Paraffin Sections: 1/10-1/50.
Reactivity:	Human
Host:	Rabbit
Isotype:	Ig
Clonality:	Polyclonal
Immunogen:	KLH conjugated synthetic peptide between 143-172 amino acids from the N-terminal region of Human Ladinin-1.
Specificity:	This antibody detects Human Ladinin-1 at N-term.
Formulation:	PBS State: Aff - Purified State: Liquid purified Ig fraction Preservative: 0.09% (W/V) Sodium Azide
Concentration:	lot specific
Purification:	Purified through a protein A column; followed by peptide affinity purification.
Conjugation:	Unconjugated
Storage:	Store undiluted at 2-8°C for one month or (in aliquots) at -20°C for longer. Avoid repeated freezing and thawing.
Stability:	Shelf life: one year from despatch.
Predicted Protein Size:	57131 Da
Gene Name:	ladinin 1
Database Link:	Entrez Gene 3898 Human O00515



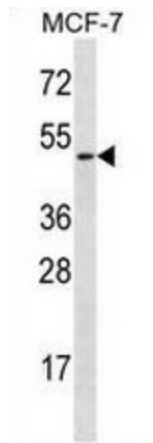
[View online »](#)

Background: The protein encoded by the LAD1 gene may be an anchoring filament that is a component of basement membranes. It may contribute to the stability of the association of the epithelial layers with the underlying mesenchyme.

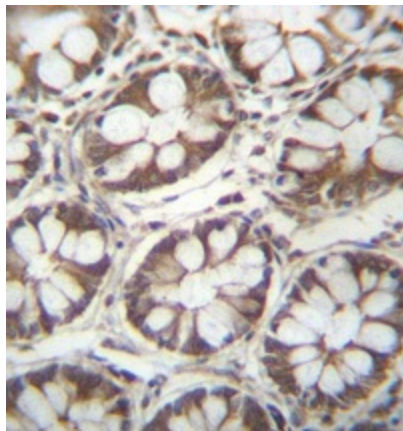
Synonyms: LAD1, LAD, Linear IgA disease antigen, LADA

Protein Families: Secreted Protein

Product images:



Western blot analysis in MCF-7 cell line lysates (35ug/lane) using Ladinin-1 antibody. (N-term). This demonstrates the Ladinin-1 antibody detected the LAD1 protein (arrow).



Immunohistochemistry analysis in human rectum tissue (formalin-fixed, paraffin-embedded) using Ladinin-1 antibody. (N-term), followed by peroxidase conjugation of the secondary antibody and DAB staining. This data demonstrates the use of Ladinin-1 antibody for IHC. Clinical relevance has not been evaluated.