

Product datasheet for **AP52436PU-N**

AFG1L (N-term) Rabbit Polyclonal Antibody

Product data:

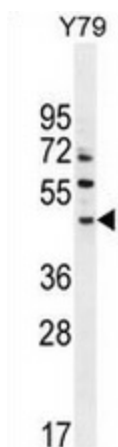
Product Type:	Primary Antibodies
Applications:	WB
Recommended Dilution:	This antibody is suitable for Western blotting . The suggested dilution is: 1/100-1/500.
Reactivity:	Human
Host:	Rabbit
Isotype:	Ig
Clonality:	Polyclonal
Immunogen:	Synthetic peptide - KLH conjugated - corresponding to the N-terminal region (between 75-104aa) of human LACE1.
Specificity:	This antibody detects human LACE1 at N-term.
Formulation:	PBS with 0.09% (W/V) Sodium Azide. State: Aff - Purified State: Liquid purified Ig fraction
Concentration:	lot specific
Purification:	Purified through a protein A column; followed by peptide affinity purification.
Conjugation:	Unconjugated
Storage:	Store the antibody undiluted at 2-8°C for one month or (in aliquots) at -20°C for longer. Avoid repeated freezing and thawing.
Stability:	Shelf life: one year from despatch.
Gene Name:	lactation elevated 1
Database Link:	Entrez Gene 246269 Human Q8WV93
Background:	LACE1 encodes a protein with possible ATPase function. The protein contains a P-loop motif and a five-domain structure that is conserved in fly, yeast, and bacteria. Two conserved estrogen receptor binding sites are located within 2.5 kb of this gene.
Synonyms:	LACE1, AFG1, Lactation elevated protein 1



[View online »](#)

Note: **Molecular Weight:** 54845 Da

Product images:



Western blot analysis in Y79 cell line lysates (35ug/lane) using LACE1 antibody. (N-term). This demonstrates the LACE1 antibody detected the LACE1 protein (arrow).