

## Product datasheet for **AP52435PU-N**

### L2HGDH (Center) Rabbit Polyclonal Antibody

#### Product data:

Product Type:	Primary Antibodies
Applications:	WB
Recommended Dilution:	This antibody is suitable for <b>Western blotting</b> . The suggested dilution is: 1/100-1/500.
Reactivity:	Human, Mouse
Host:	Rabbit
Isotype:	Ig
Clonality:	Polyclonal
Immunogen:	Synthetic peptide - KLH conjugated - corresponding to the central region (between 139-167aa) of human L2HGDH/Duranin.
Specificity:	This antibody detects L2HGDH/ Duranin.
Formulation:	PBS with 0.09% (W/V) Sodium Azide. State: Aff - Purified State: Liquid purified Ig fraction
Concentration:	lot specific
Purification:	Purified through a protein A column; followed by peptide affinity purification.
Conjugation:	Unconjugated
Storage:	Store the antibody undiluted at 2-8°C for one month or (in aliquots) at -20°C for longer. Avoid repeated freezing and thawing.
Stability:	Shelf life: one year from despatch.
Gene Name:	L-2-hydroxyglutarate dehydrogenase
Database Link:	<a href="#">Entrez Gene 217666 Mouse</a> <a href="#">Entrez Gene 79944 Human</a> <a href="#">Q9H9P8</a>
Background:	The L2HGDH gene encodes L-2-hydroxyglutarate dehydrogenase, a FAD-dependent enzyme that oxidizes L-2-hydroxyglutarate to alpha-ketoglutarate in a variety of mammalian tissues. Mutations in this gene cause L-2-hydroxyglutaric aciduria, a rare autosomal recessive neurometabolic disorder resulting in moderate to severe mental retardation.
Synonyms:	L2HGDH, C14orf160, hydroxyglutarate dehydrogenase

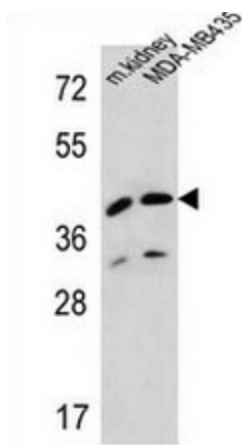


[View online »](#)

Note: **Molecular Weight:** 50359 Da

Protein Pathways: Butanoate metabolism

**Product images:**



Western blot analysis in MDA-MB435 cell line and mouse kidney tissue lysates (35ug/lane) using L2HGDH/Duranin antibody. This demonstrates the L2HGDH antibody detected the L2HGDH protein (arrow).