

## Product datasheet for **AP52433PU-N**

### **KY (N-term) Rabbit Polyclonal Antibody**

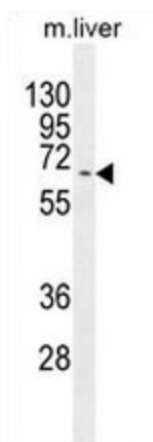
#### **Product data:**

Product Type:	Primary Antibodies
Applications:	WB
Recommended Dilution:	This antibody is suitable for <b>Western blotting</b> . The suggested dilution is: 1/100-1/500.
Reactivity:	Human, Mouse
Host:	Rabbit
Isotype:	Ig
Clonality:	Polyclonal
Immunogen:	Synthetic peptide ( between 111-141 aa) - KLH conjugated - corresponding to the N-terminal region of human KY.
Specificity:	This antibody detects KY at N-term.
Formulation:	PBS with 0.09% (W/V) Sodium Azide. State: Aff - Purified State: Liquid purified Ig fraction
Concentration:	lot specific
Purification:	Purified through a protein A column, followed by peptide affinity purification.
Conjugation:	Unconjugated
Storage:	Store the antibody undiluted at 2-8°C for one month or (in aliquots) at -20°C for longer. Avoid repeated freezing and thawing.
Stability:	Shelf life: one year from despatch.
Gene Name:	kyphoscoliosis peptidase
Database Link:	<a href="#">Entrez Gene 339855 Human Q8NBH2</a>
Synonyms:	Kyphoscoliosis peptidase
Note:	<b>Molecular Weight:</b> 63885 Da



[View online »](#)

## Product images:



Western blot analysis in mouse liver tissue lysates (35ug/lane) using KY antibody. (N-term). This demonstrates the KY antibody detected the KY protein (arrow).