

Product datasheet for **AP52430PU-N**

KRTCAP2 (C-term) Rabbit Polyclonal Antibody

Product data:

Product Type:	Primary Antibodies
Applications:	IHC, WB
Recommended Dilution:	ELISA: 1/1000. Western blot: 1/100 - 1/500. Immunohistochemistry on paraffin sections: 1/10 - 1/50.
Reactivity:	Human, Mouse
Host:	Rabbit
Isotype:	Ig
Clonality:	Polyclonal
Immunogen:	KLH conjugated synthetic peptide between 131-162 amino acids from the C-terminal region of human KTAP2
Specificity:	This antibody reacts to KTAP2.
Formulation:	PBS State: Aff - Purified State: Liquid purified Ig fraction Preservative: 0.09% (W/V) sodium azide
Concentration:	lot specific
Purification:	Affinity chromatography on Protein A
Conjugation:	Unconjugated
Storage:	Store the antibody undiluted at 2-8°C for one month or (in aliquots) at -20°C for longer. Avoid repeated freezing and thawing.
Stability:	Shelf life: one year from despatch.
Predicted Protein Size:	17595 Da
Gene Name:	keratinocyte associated protein 2
Database Link:	Entrez Gene 66059 Mouse Entrez Gene 200185 Human Q8N6L1



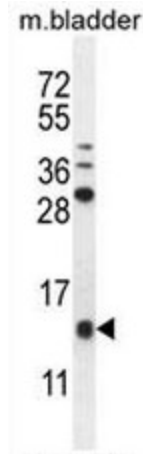
[View online »](#)

Background: E3 ubiquitin-protein ligase which accepts ubiquitin from E2 ubiquitin-conjugating enzymes UBE2L3 and UBE2L6 in the form of a thioester and then directly transfers the ubiquitin to targeted substrates, such as UCKL1. Involved in the cytolytic activity of natural killer cells and cytotoxic T-cells.

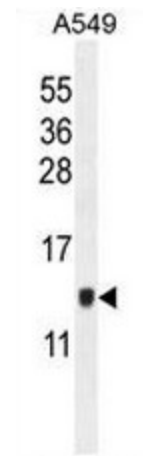
Synonyms: KCP-2

Protein Families: Transmembrane

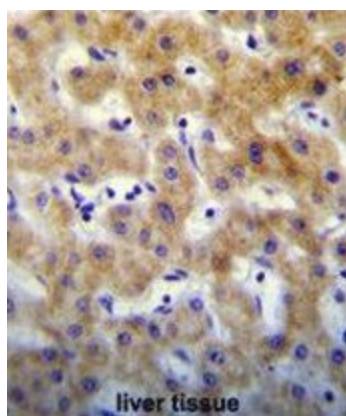
Product images:



KTAP2 Antibody (C-term) western blot analysis in mouse bladder tissue lysates (35ug/lane). This demonstrates the KTAP2 antibody detected the KTAP2 protein (arrow).



KTAP2 Antibody (C-term) western blot analysis in A549 cell line lysates (35ug/lane). This demonstrates the KTAP2 antibody detected the KTAP2 protein (arrow).



KTAP2 Antibody (C-term) immunohistochemistry analysis in formalin fixed and paraffin embedded human liver tissue followed by peroxidase conjugation of the secondary antibody and DAB staining. This data demonstrates the use of KTAP2 Antibody (C-term) for immunohistochemistry. Clinical relevance has not been evaluated.