

## Product datasheet for **AP52429PU-N**

### **KRT33A (N-term) Rabbit Polyclonal Antibody**

#### **Product data:**

Product Type:	Primary Antibodies
Applications:	WB
Recommended Dilution:	<b>ELISA:</b> 1/1000. <b>Western blot:</b> 1/100 - 1/500
Reactivity:	Human, Mouse
Host:	Rabbit
Isotype:	Ig
Clonality:	Polyclonal
Immunogen:	KLH conjugated synthetic peptide between 63-93 amino acids from the N-terminal region of human KT33A
Specificity:	This antibody reacts to KT33A.
Formulation:	PBS State: Aff - Purified State: Liquid purified Ig fraction Preservative: 0,09% sodium azide
Concentration:	lot specific
Purification:	Affinity chromatography on Protein A
Conjugation:	Unconjugated
Storage:	Store the antibody undiluted at 2-8°C for one month or (in aliquots) at -20°C for longer. Avoid repeated freezing and thawing.
Stability:	Shelf life: one year from despatch.
Predicted Protein Size:	45940 Da
Gene Name:	keratin 33A
Database Link:	<a href="#">Entrez Gene 3883 Human</a> <a href="#">O76009</a>



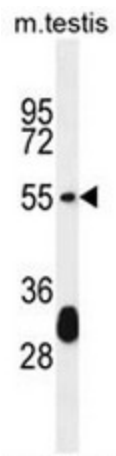
[View online »](#)

**Background:**

The protein encoded by this gene is a member of the keratin gene family. It is one of the type I hair keratin genes which are clustered in a region of chromosome 17q12-q21 and have the same direction of transcription. As a type I hair keratin, it is an acidic protein which heterodimerizes with type II keratins to form hair and nails. There are two isoforms of this protein, encoded by two separate genes, KRTHA3A and KRTHA3B. [provided by RefSeq].

**Synonyms:**

HHA3-I, HKA3A, KRTHA3A, Hair keratin type I Ha3-I, K33A

**Product images:**

KT33A Antibody (N-term) western blot analysis in mouse testis tissue lysates (35ug/lane). This demonstrates the KT33A antibody detected the KT33A protein (arrow).