

Product datasheet for **AP52428PU-N**

KSR2 (C-term) Rabbit Polyclonal Antibody

Product data:

| | |
|-------------------------|--|
| Product Type: | Primary Antibodies |
| Applications: | FC, IHC, WB |
| Recommended Dilution: | ELISA: 1/1000. Western blot: 1/100 -1/500. Immunohistochemistry: 1/50 - 1/100. Flow Cytometry: 1/10 - 1/50. |
| Reactivity: | Human |
| Host: | Rabbit |
| Isotype: | Ig |
| Clonality: | Polyclonal |
| Immunogen: | KLH conjugated synthetic peptide selected from the C-terminal region of human KSR2 |
| Specificity: | This antibody reacts to KSR2. |
| Formulation: | PBS State: Aff - Purified State: Liquid purified Ig fraction Preservative: 0.09% (W/V) sodium azide |
| Concentration: | lot specific |
| Purification: | Affinity chromatography on Protein A |
| Conjugation: | Unconjugated |
| Storage: | Store the antibody undiluted at 2-8°C for one month or (in aliquots) at -20°C for longer. Avoid repeated freezing and thawing. |
| Stability: | Shelf life: one year from despatch. |
| Predicted Protein Size: | 107632 Da |
| Gene Name: | kinase suppressor of ras 2 |
| Database Link: | Entrez Gene 283455 Human Q6VAB6 |



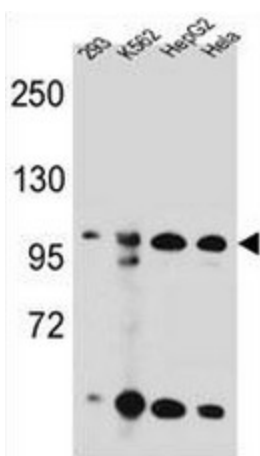
[View online »](#)

Background: Location-regulated scaffold connecting MEK to RAF. Blocks MAP3K8 kinase activity and MAP3K8-mediated signaling. Acts as a negative regulator of MAP3K3-mediated activation of ERK, JNK and NF-kappa-B pathways, inhibiting MAP3K3-mediated interleukin-8 production.

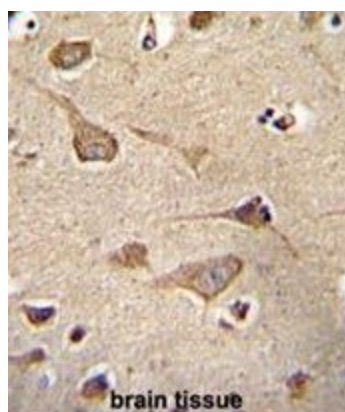
Synonyms: KSR2, KSR-2, hKSR2, hKSR-2

Protein Families: Druggable Genome, Protein Kinase

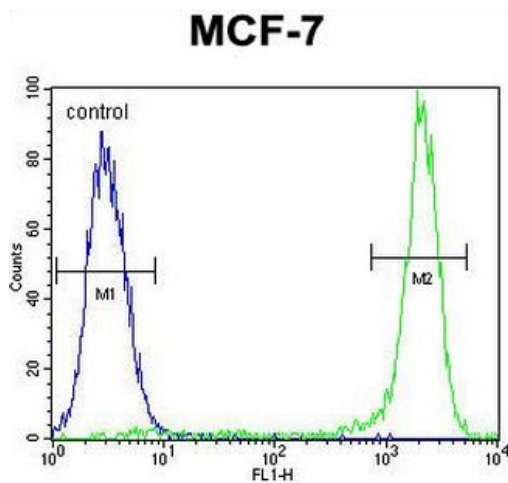
Product images:



KSR2 Antibody (C-term) western blot analysis in 293, K562, HepG2, HeLa cell line lysates (35ug/lane). This demonstrates the KSR2 antibody detected the KSR2 protein (arrow).



KSR2 Antibody (C-term) immunohistochemistry analysis in formalin fixed and paraffin embedded human brain tissue followed by peroxidase conjugation of the secondary antibody and DAB staining. This data demonstrates the use of KSR2 Antibody (C-term) for immunohistochemistry. Clinical relevance has not been evaluated.



KSR2 Antibody (C-term) flow cytometric analysis of MCF-7 cells (right histogram) compared to a negative control cell (left histogram). FITC-conjugated goat-anti-rabbit secondary antibodies were used for the analysis.