

## Product datasheet for **AP52426PU-N**

### **KRTAP25-1 (C-term) Rabbit Polyclonal Antibody**

#### **Product data:**

Product Type:	Primary Antibodies
Applications:	WB
Recommended Dilution:	<b>ELISA:</b> 1/1000. <b>Western Blot:</b> 1/100 - 1/500.
Reactivity:	Human
Host:	Rabbit
Isotype:	Ig
Clonality:	Polyclonal
Immunogen:	KLH conjugated synthetic peptide between 80-110 amino acids from the C-terminal region of human KRTAP25-1
Specificity:	This antibody reacts to KRTAP25-1.
Formulation:	PBS State: Aff - Purified State: Liquid purified Ig fraction Preservative: 0.09% (W/V) sodium azide
Concentration:	lot specific
Purification:	Affinity chromatography on Protein A
Conjugation:	Unconjugated
Storage:	Store the antibody undiluted at 2-8°C for one month or (in aliquots) at -20°C for longer. Avoid repeated freezing and thawing.
Stability:	Shelf life: one year from despatch.
Predicted Protein Size:	11738 Da
Gene Name:	keratin associated protein 25-1
Database Link:	<a href="#">Entrez Gene 100131902 Human Q3LHNO</a>



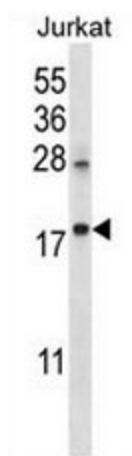
[View online »](#)

**Background:**

In the hair cortex, hair keratin intermediate filaments are embedded in an interfilamentous matrix, consisting of hair keratin-associated proteins (KRTAP), which are essential for the formation of a rigid and resistant hair shaft through their extensive disulfide bond cross-linking with abundant cysteine residues of hair keratins. The matrix proteins include the high-sulfur and high-glycine-tyrosine keratins (By similarity).

**Synonyms:**

Keratin-associated protein 25-1, KAP25.1

**Product images:**

KRTAP25-1 Antibody (C-term) western blot analysis in Jurkat cell line lysates (35ug/lane). This demonstrates the KRTAP25-1 antibody detected the KRTAP25-1 protein (arrow).