

Product datasheet for **AP52425PU-N**

KRTAP13-3 (C-term) Rabbit Polyclonal Antibody

Product data:

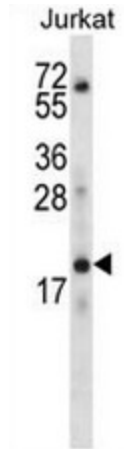
Product Type:	Primary Antibodies
Applications:	WB
Recommended Dilution:	ELISA: 1/1000. Western Blot: 1/100 - 1/500.
Reactivity:	Human
Host:	Rabbit
Isotype:	Ig
Clonality:	Polyclonal
Immunogen:	KLH conjugated synthetic peptide between 107-135 amino acids from the C-terminal region of human KRTAP13-3
Specificity:	This antibody reacts to KRTAP13-3.
Formulation:	PBS State: Aff - Purified State: Liquid purified Ig fraction Preservative: 0.09% (W/V) sodium azide
Concentration:	lot specific
Purification:	Affinity chromatography on Protein A
Conjugation:	Unconjugated
Storage:	Store the antibody undiluted at 2-8°C for one month or (in aliquots) at -20°C for longer. Avoid repeated freezing and thawing.
Stability:	Shelf life: one year from despatch.
Predicted Protein Size:	19236 Da
Gene Name:	keratin associated protein 13-3
Database Link:	Entrez Gene 337960 Human Q3SY46



[View online »](#)

Background:

In the hair cortex, hair keratin intermediate filaments are embedded in an interfilamentous matrix, consisting of hair keratin-associated proteins (KRTAP), which are essential for the formation of a rigid and resistant hair shaft through their extensive disulfide bond cross-linking with abundant cysteine residues of hair keratins. The matrix proteins include the high-sulfur and high-glycine-tyrosine keratins (By similarity)

Product images:

KRTAP13-3 Antibody (C-term) western blot analysis in Jurkat cell line lysates (35ug/lane). This demonstrates the KRTAP13-3 antibody detected the KRTAP13-3 protein (arrow).