

## Product datasheet for **AP52422PU-N**

### **KRT75 (N-term) Rabbit Polyclonal Antibody**

#### **Product data:**

Product Type:	Primary Antibodies
Applications:	WB
Recommended Dilution:	<b>ELISA:</b> 1/1000. <b>Western Blot:</b> 1/100 - 1/500.
Reactivity:	Human
Host:	Rabbit
Isotype:	Ig
Clonality:	Polyclonal
Immunogen:	KLH conjugated synthetic peptide between 65-92 amino acids from the N-terminal region of human KRT75
Specificity:	This antibody reacts to KRT75.
Formulation:	PBS State: Aff - Purified State: Liquid purified Ig fraction Preservative: 0.09% (W/V) sodium azide
Concentration:	lot specific
Purification:	Affinity chromatography on Protein A
Conjugation:	Unconjugated
Storage:	Store the antibody undiluted at 2-8°C for one month or (in aliquots) at -20°C for longer. Avoid repeated freezing and thawing.
Stability:	Shelf life: one year from despatch.
Predicted Protein Size:	59560 Da
Gene Name:	Homo sapiens keratin 75, type II (KRT75)
Database Link:	<a href="#">Entrez Gene 9119 Human</a> <a href="#">O95678</a>



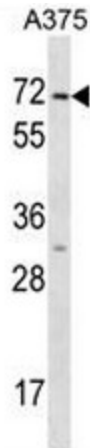
[View online »](#)

**Background:**

This gene is a member of the type II keratin family clustered on the long arm of chromosome 12. Type I and type II keratins heteropolymerize to form intermediate-sized filaments in the cytoplasm of epithelial cells. This gene is expressed in the companion layer, upper germinative matrix region of the hair follicle, and medulla of the hair shaft. The encoded protein plays an essential role in hair and nail formation. Variations in this gene have been associated with the hair disorders pseudofolliculitis barbae (PFB) and loose anagen hair syndrome (LAHS).

**Synonyms:**

KRT75, K6HF, KB18, Cytokeratin-75, CK75, Keratin-75, K75, Type II keratin-K6hf

**Product images:**

KRT75 Antibody (N-term) western blot analysis in A375 cell line lysates (35ug/lane). This demonstrates the KRT75 antibody detected the KRT75 protein (arrow).