

Product datasheet for **AP52420PU-N**

KRT73 (C-term) Rabbit Polyclonal Antibody

Product data:

Product Type:	Primary Antibodies
Applications:	IHC, WB
Recommended Dilution:	ELISA: 1/1000. Western Blot: 1/100 - 1/500. Immunohistochemistry on paraffin sections: 1/10 - 1/50.
Reactivity:	Human
Host:	Rabbit
Isotype:	Ig
Clonality:	Polyclonal
Immunogen:	KLH conjugated synthetic peptide between 500-530 amino acids from the C-terminal region of human KRT73
Specificity:	This antibody reacts to KRT73.
Formulation:	PBS State: Aff - Purified State: Liquid purified Ig fraction Preservative: 0.09% (W/V) sodium azide
Concentration:	lot specific
Purification:	Affinity chromatography on Protein A
Conjugation:	Unconjugated
Storage:	Store the antibody undiluted at 2-8°C for one month or (in aliquots) at -20°C for longer. Avoid repeated freezing and thawing.
Stability:	Shelf life: one year from despatch.
Predicted Protein Size:	58923 Da
Gene Name:	keratin 73
Database Link:	Entrez Gene 319101 Human Q86Y46

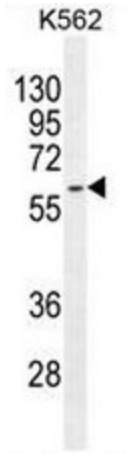


[View online »](#)

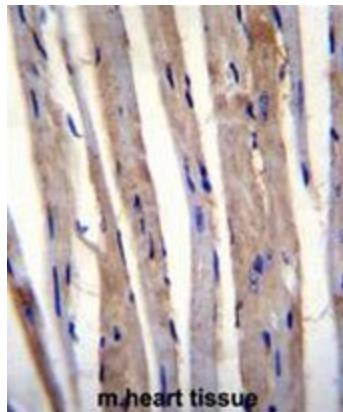
Background: Keratins are intermediate filament proteins responsible for the structural integrity of epithelial cells and are subdivided into epithelial keratins and hair keratins. This gene encodes a protein that is expressed in the inner root sheath of hair follicles. The type II keratins are clustered in a region of chromosome 12q13.

Synonyms: KRT73, K6IRS3, KB36, KRT6IRS3, Cytokeratin-73, CK73, Keratin-73, K73, Type II keratin-36

Product images:



KRT73 Antibody (C-term) western blot analysis in K562 cell line lysates (35ug/lane). This demonstrates the KRT73 antibody detected the KRT73 protein (arrow).



KRT73 Antibody (C-term) immunohistochemistry analysis in formalin fixed and paraffin embedded m.heart tissue followed by peroxidase conjugation of the secondary antibody and DAB staining. This data demonstrates the use of KRT73 Antibody (C-term) for immunohistochemistry. Clinical relevance has not been evaluated.