

Product datasheet for **AP52417PU-N**

Cytokeratin 3 (KRT3) (Center) Rabbit Polyclonal Antibody

Product data:

Product Type:	Primary Antibodies
Applications:	WB
Recommended Dilution:	ELISA: 1/1000. Western Blot: 1/100 - 1/500.
Reactivity:	Human
Host:	Rabbit
Isotype:	Ig
Clonality:	Polyclonal
Immunogen:	KLH conjugated synthetic peptide between 413-441 amino acids from the Central region of human KRT3
Specificity:	This antibody reacts to KRT3.
Formulation:	PBS State: Aff - Purified State: Liquid purified Ig fraction Preservative: 0.09% (W/V) sodium azide
Concentration:	lot specific
Purification:	Affinity chromatography on Protein A
Conjugation:	Unconjugated
Storage:	Store the antibody undiluted at 2-8°C for one month or (in aliquots) at -20°C for longer. Avoid repeated freezing and thawing.
Stability:	Shelf life: one year from despatch.
Predicted Protein Size:	64417 Da
Gene Name:	keratin 3
Database Link:	Entrez Gene 3850 Human P12035



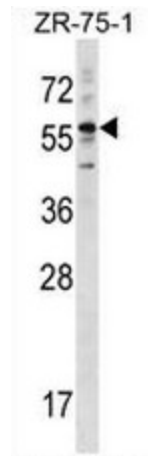
[View online »](#)

Background:

The protein encoded by this gene is a member of the keratin gene family. The type II cytokeratins consist of basic or neutral proteins which are arranged in pairs of heterotypic keratin chains coexpressed during differentiation of simple and stratified epithelial tissues. This type II cytokeratin is specifically expressed in the corneal epithelium with family member KRT12 and mutations in these genes have been associated with Meesmann's Corneal Dystrophy. The type II cytokeratins are clustered in a region of chromosome 12q12-q13.

Synonyms:

Keartin-3, KRT3, Type-II keratin Kb3

Product images:

KRT3 Antibody (Center) western blot analysis in ZR-75-1 cell line lysates (35ug/lane). This demonstrates the KRT3 antibody detected the KRT3 protein (arrow).