

Product datasheet for **AP52415PU-N**

KRT28 (C-term) Rabbit Polyclonal Antibody

Product data:

Product Type:	Primary Antibodies
Applications:	WB
Recommended Dilution:	ELISA: 1/1000. Western Blot: 1/100 - 1/500.
Reactivity:	Human
Host:	Rabbit
Isotype:	Ig
Clonality:	Polyclonal
Immunogen:	KLH conjugated synthetic peptide between 431-460 amino acids from the C-terminal region of human KRT28
Specificity:	This antibody reacts to KRT28.
Formulation:	PBS State: Aff - Purified State: Liquid purified Ig fraction Preservative: 0.09% (W/V) sodium azide
Concentration:	lot specific
Purification:	Affinity chromatography on Protein A
Conjugation:	Unconjugated
Storage:	Store the antibody undiluted at 2-8°C for one month or (in aliquots) at -20°C for longer. Avoid repeated freezing and thawing.
Stability:	Shelf life: one year from despatch.
Predicted Protein Size:	50567 Da
Gene Name:	keratin 28
Database Link:	<u>Entrez Gene 162605 Human Q7Z3Y7</u>



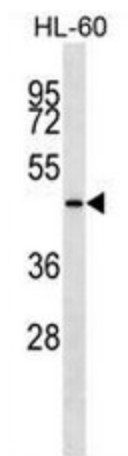
[View online »](#)

Background:

This gene encodes a member of the type I (acidic) keratin family, which belongs to the superfamily of intermediate filament (IF) proteins. Keratins are heteropolymeric structural proteins which form the intermediate filament. These filaments, along with actin microfilaments and microtubules, compose the cytoskeleton of epithelial cells. The type I keratin genes are clustered in a region of chromosome 17q12-q21.

Synonyms:

Cytokeratin-28, CK28, K28, Keratin-28, KRT28, Keratin-25D, KRT25D, K25irs4

Product images:

KRT28 Antibody (C-term) western blot analysis in HL-60 cell line lysates (35ug/lane). This demonstrates the KRT28 antibody detected the KRT28 protein (arrow).