

## Product datasheet for **AP52414PU-N**

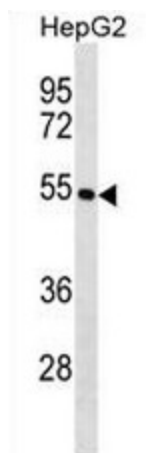
### **KRT26 (N-term) Rabbit Polyclonal Antibody**

#### **Product data:**

Product Type:	Primary Antibodies
Applications:	WB
Recommended Dilution:	<b>ELISA:</b> 1/1000. <b>Western Blot:</b> 1/100 - 1/500.
Reactivity:	Human
Host:	Rabbit
Isotype:	Ig
Clonality:	Polyclonal
Immunogen:	KLH conjugated synthetic peptide between 116-146 amino acids from the N-terminal region of human KRT26
Specificity:	This antibody reacts to KRT26.
Formulation:	PBS State: Aff - Purified State: Liquid purified Ig fraction Preservative: 0.09% (W/V) sodium azide
Concentration:	lot specific
Purification:	Affinity chromatography on Protein A
Conjugation:	Unconjugated
Storage:	Store the antibody undiluted at 2-8°C for one month or (in aliquots) at -20°C for longer. Avoid repeated freezing and thawing.
Stability:	Shelf life: one year from despatch.
Predicted Protein Size:	51911 Da
Gene Name:	keratin 26
Database Link:	<a href="#">Entrez Gene 353288 Human Q7Z3Y9</a>
Synonyms:	Keratin-26, KRT26, KRT25B



[View online »](#)

**Product images:**

KRT26 Antibody (N-term) western blot analysis in HepG2 cell line lysates (35ug/lane). This demonstrates the KRT26 antibody detected the KRT26 protein (arrow).