

Product datasheet for **AP52413PU-N**

KRT25 (C-term) Rabbit Polyclonal Antibody

Product data:

Product Type:	Primary Antibodies
Applications:	WB
Recommended Dilution:	ELISA: 1/1000. Western Blot: 1/100 - 1/500.
Reactivity:	Human
Host:	Rabbit
Isotype:	Ig
Clonality:	Polyclonal
Immunogen:	KLH conjugated synthetic peptide between 387-426 amino acids from the C-terminal region of human KRT25
Specificity:	This antibody reacts to KRT25.
Formulation:	PBS State: Aff - Purified State: Liquid purified Ig fraction Preservative: 0.09% (W/V) sodium azide
Concentration:	lot specific
Purification:	Affinity chromatography on Protein A
Conjugation:	Unconjugated
Storage:	Store the antibody undiluted at 2-8°C for one month or (in aliquots) at -20°C for longer. Avoid repeated freezing and thawing.
Stability:	Shelf life: one year from despatch.
Predicted Protein Size:	49318 Da
Gene Name:	keratin 25
Database Link:	Entrez Gene 147183 Human Q7Z3Z0



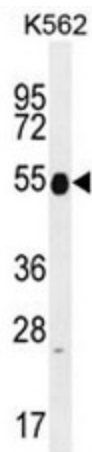
[View online »](#)

Background:

This gene encodes a member of the type I (acidic) keratin family, which belongs to the superfamily of intermediate filament (IF) proteins. Keratins are heteropolymeric structural proteins which form the intermediate filament. These filaments, along with actin microfilaments and microtubules, compose the cytoskeleton of epithelial cells. The type I keratin genes are clustered in a region of chromosome 17q12-q21.

Synonyms:

Cytokeratin-25, CK25, K25, Keratin-25A, KRT25A, K25irs1

Product images:

KRT25 Antibody (C-term) western blot analysis in K562 cell line lysates (35ug/lane). This demonstrates the KRT25 antibody detected the KRT25 protein (arrow).