

Product datasheet for **AP52412PU-N**

KRT222P (KRT222) (C-term) Rabbit Polyclonal Antibody

Product data:

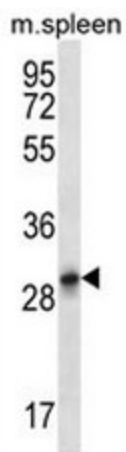
Product Type:	Primary Antibodies
Applications:	WB
Recommended Dilution:	ELISA: 1/1000. Western Blot: 1/100 - 1/500.
Reactivity:	Human, Mouse
Host:	Rabbit
Isotype:	Ig
Clonality:	Polyclonal
Immunogen:	KLH conjugated synthetic peptide between 229-258 amino acids from the C-terminal region of human KRT222P
Specificity:	This antibody reacts to KRT222P.
Formulation:	PBS State: Aff - Purified State: Liquid purified Ig fraction Preservative: 0.09% (W/V) sodium azide
Concentration:	lot specific
Purification:	Affinity chromatography on Protein A
Conjugation:	Unconjugated
Storage:	Store the antibody undiluted at 2-8°C for one month or (in aliquots) at -20°C for longer. Avoid repeated freezing and thawing.
Stability:	Shelf life: one year from despatch.
Predicted Protein Size:	34158 Da
Gene Name:	keratin 222
Database Link:	Entrez Gene 268481 Mouse Entrez Gene 125113 Human Q8N1A0
Background:	KRT222P belongs to the intermediate filament family. The exact function of KRT222P is not known.



[View online »](#)

Synonyms: Keratin-like protein KRT222, Keratin-222

Product images:



KRT222P Antibody (C-term) western blot analysis in mouse spleen tissue lysates (35ug/lane). This demonstrates the KRT222P antibody detected the KRT222P protein (arrow).