

Product datasheet for **AP52411PU-N**

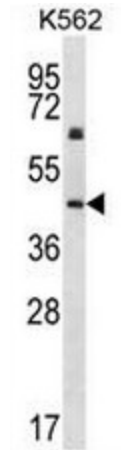
Keratin 12 (KRT12) (C-term) Rabbit Polyclonal Antibody

Product data:

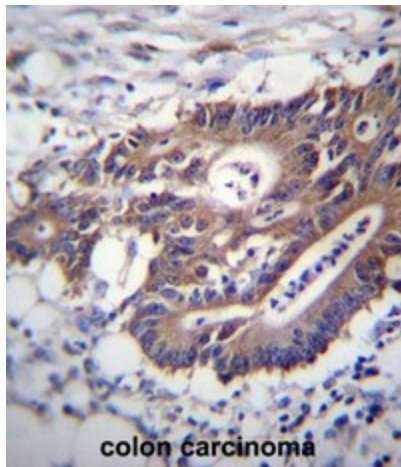
Product Type:	Primary Antibodies
Applications:	FC, IHC, WB
Recommended Dilution:	Western Blot: 1/1000. Immunohistochemistry on paraffin sections: 1/10 - 1/50. Flow Cytometry: 1/10-1/50.
Reactivity:	Human
Host:	Rabbit
Isotype:	Ig
Clonality:	Polyclonal
Immunogen:	KLH conjugated synthetic peptide between 442-471 amino acids from the C-terminal region of human KRT12
Specificity:	This antibody reacts to KRT12.
Formulation:	PBS State: Aff - Purified State: Liquid purified Ig fraction Preservative: 0.09% (W/V) sodium azide
Concentration:	lot specific
Purification:	Affinity chromatography on Protein A
Conjugation:	Unconjugated
Storage:	Store the antibody undiluted at 2-8°C for one month or (in aliquots) at -20°C for longer. Avoid repeated freezing and thawing.
Stability:	Shelf life: one year from despatch.
Gene Name:	keratin 12
Database Link:	Entrez Gene 3859 Human Q99456
Background:	KRT12 encodes the type I intermediate filament chain keratin 12, expressed in corneal epithelia. Mutations in this gene lead to Meesmann corneal dystrophy.
Synonyms:	Keratin-12, KRT12



[View online »](#)

Product images:

KRT12 Antibody (C-term) western blot analysis in K562 cell line lysates (35ug/lane). This demonstrates the KRT12 antibody detected the KRT12 protein (arrow).



KRT12 Antibody (C-term) immunohistochemistry analysis in formalin fixed and paraffin embedded human colon carcinoma followed by peroxidase conjugation of the secondary antibody and DAB staining. This data demonstrates the use of KRT12 Antibody (C-term) for immunohistochemistry. Clinical relevance has not been evaluated.