

Product datasheet for **AP52410PU-N**

Cytokeratin 1 (KRT1) (Center) Rabbit Polyclonal Antibody

Product data:

Product Type:	Primary Antibodies
Applications:	FC, IHC, WB
Recommended Dilution:	ELISA: 1/1000. Western Blot: 1/100 - 1/500. Flow Cytometry: 1/10 - 1/50. Immunohistochemistry on paraffin sections: 1/50 - 1/100.
Reactivity:	Human
Host:	Rabbit
Isotype:	Ig
Clonality:	Polyclonal
Immunogen:	KLH conjugated synthetic peptide between 422~451 amino acids from the Central region of human KRT1
Specificity:	This antibody reacts to KRT1.
Formulation:	PBS State: Purified State: Liquid purified Ig fraction Preservative: 0.09% (W/V) sodium azide
Concentration:	lot specific
Purification:	Saturated Ammonium Sulfate (SAS) precipitation
Conjugation:	Unconjugated
Storage:	Store the antibody undiluted at 2-8°C for one month or (in aliquots) at -20°C for longer. Avoid repeated freezing and thawing.
Stability:	Shelf life: one year from despatch.
Predicted Protein Size:	66039 Da
Gene Name:	keratin 1
Database Link:	Entrez Gene 3848 Human P04264



[View online »](#)

Background:

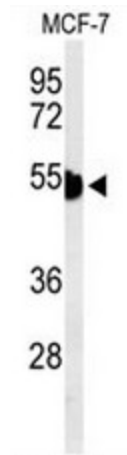
KRT1 is a member of the keratin gene family. The type II cytokeratins consist of basic or neutral proteins which are arranged in pairs of heterotypic keratin chains coexpressed during differentiation of simple and stratified epithelial tissues. This type II cytokeratin is specifically expressed in the spinous and granular layers of the epidermis with family member KRT10 and mutations in these genes have been associated with bullous congenital ichthyosiform erythroderma.

Synonyms:

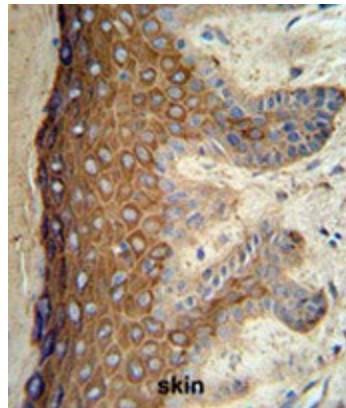
Keratin-1, KRT1, K1, Cytokeratin 1, Hair alpha protein, 67 kDA cytokeratin, KRTA

Protein Families:

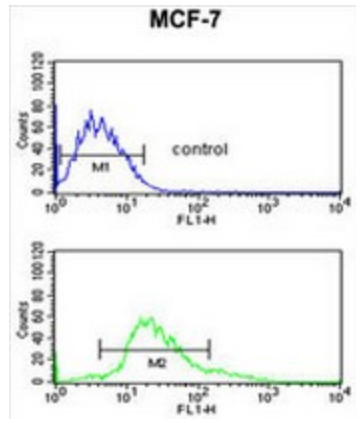
Druggable Genome

Product images:


Western blot analysis of KRT1 Antibody (Center) in MCF-7 cell line lysates (35ug/lane). KRT1 (arrow) was detected using the purified Pab.



KRT1 Antibody (Center) IHC analysis in formalin fixed and paraffin embedded skin tissue followed by peroxidase conjugation of the secondary antibody and DAB staining. This data demonstrates the use of the KRT1 Antibody (Center) for immunohistochemistry. Clinical relevance has not been evaluated.



KRT1 Antibody (Center) flow cytometric analysis of MCF-7 cells (bottom histogram) compared to a negative control cell (top histogram). FITC-conjugated goat-anti-rabbit secondary antibodies were used for the analysis.